

# КАТАЛОГ

на оборудование ТЕСНІК

**Архангельск** (8182)63-90-72  
**Астана** (7172)727-132  
**Астрахань** (8512)99-46-04  
**Барнаул** (3852)73-04-60  
**Белгород** (4722)40-23-64  
**Брянск** (4832)59-03-52  
**Владивосток** (423)249-28-31  
**Волгоград** (844)278-03-48  
**Вологда** (8172)26-41-59  
**Воронеж** (473)204-51-73  
**Екатеринбург** (343)384-55-89  
**Иваново** (4932)77-34-06

**Ижевск** (3412)26-03-58  
**Иркутск** (395)279-98-46  
**Казань** (843)206-01-48  
**Калининград** (4012)72-03-81  
**Калуга** (4842)92-23-67  
**Кемерово** (3842)65-04-62  
**Киров** (8332)68-02-04  
**Краснодар** (861)203-40-90  
**Красноярск** (391)204-63-61  
**Курск** (4712)77-13-04  
**Липецк** (4742)52-20-81  
**Киргизия** (996)312-96-26-47

**Магнитогорск** (3519)55-03-13  
**Москва** (495)268-04-70  
**Мурманск** (8152)59-64-93  
**Набережные Челны** (8552)20-53-41  
**Нижний Новгород** (831)429-08-12  
**Новокузнецк** (3843)20-46-81  
**Новосибирск** (383)227-86-73  
**Омск** (3812)21-46-40  
**Орел** (4862)44-53-42  
**Оренбург** (3532)37-68-04  
**Пенза** (8412)22-31-16  
**Россия** (495)268-04-70

**Пермь** (342)205-81-47  
**Ростов-на-Дону** (863)308-18-15  
**Рязань** (4912)46-61-64  
**Самара** (846)206-03-16  
**Санкт-Петербург** (812)309-46-40  
**Саратов** (845)249-38-78  
**Севастополь** (8692)22-31-93  
**Симферополь** (3652)67-13-56  
**Смоленск** (4812)29-41-54  
**Сочи** (862)225-72-31  
**Ставрополь** (8652)20-65-13  
**Казахстан** (772)734-952-31

**Сургут** (3462)77-98-35  
**Тверь** (4822)63-31-35  
**Томск** (3822)98-41-53  
**Тула** (4872)74-02-29  
**Тюмень** (3452)66-21-18  
**Ульяновск** (8422)24-23-59  
**Уфа** (347)229-48-12  
**Хабаровск** (4212)92-98-04  
**Челябинск** (351)202-03-61  
**Череповец** (8202)49-02-64  
**Ярославль** (4852)69-52-93

# Standard X-ray Inspection System



X-ray Inspection System takes advantages of the penetrating power of X-ray to detect contamination. It can achieve a full range of contaminants inspection including metallic, non-metallic contaminants (glass, ceramic, stone, bone, hard rubber, hard plastic, etc.). It can inspect metallic, non-metallic packaging and canned products, and the inspection result will not be affected by temperature, humidity, salt content, etc.

Recommended use of X-ray inspection systems

1. Not only metal contaminants, but other non-metals such as stones, ceramic, glass as well.
2. Aluminum film packaged food and metallic packaged food
3. High salinity food, such as pickles which has strong product effect
4. Canned food
5. High requirements for the inspection of SUS
6. Defect detection, such as tablet defect.

## **Main Advantages:**

### **TIMA platform**

High Sensitivity and Accuracy  
Low Energy Consumption and Low Radiation  
Modularized Hardware Platform  
High Level Hygienic Design  
Excellent Image Processing Algorithm

### **High resolution detector**

4-5 times better in exposure compared with standard 0.4mm detector  
With high resolution detector, low power generator is required, higher sensitivity, longer service time, low radiation and maintenance cost.

## High IP protection level

X-ray detector: IP67

Inspection tunnel: IP67

IP69K for meat and seafood products

## Updated software

Intelligent software for plastic, shell etc

Auto-learning function

Remote-setting

## User-friendly

Big touch screen

Multiple language

Automatic monitoring interface

Ethernet and USB port

## Completed solution

Different configuration based on different requests

Various rejecter systems

## Parameters

Model	Standard TXR Series							
Standard	2480	4080	4080L	4080S	4080SL	4080SH	5080SH	6080SH
X-ray Tube	MAX.80kV, 150W	MAX.80kV, 210W		MAX. 80kV, 350W				
Inspection Width	240mm	400mm				500mm	600mm	
Inspection Height	110mm	160mm	100mm	160mm	100mm	220mm	250mm	300mm
Best Inspection Sensitivity	Stainless steel ball $\Phi$ 0.3mm Stainless steel wire $\Phi$ 0.2*2mm Glass/Ceramic ball $\Phi$ 1.0mm					Stainless steel ball $\Phi$ 0.4mm Stainless steel wire $\Phi$ 0.2*2mm Glass/Ceramic ball $\Phi$ 1.0mm		
Conveyor Speed	5-60m/min					10-40m/min		
O/S	Windows 7							
Protection Method	Soft curtain							
X-ray Leakage	< 1 $\mu$ Sv/h (CE Standard)							
IP Rate	IP65 (Under belt)							
Working Environment	Temperature: -10-40°C							
	Humidity: 30-90% no dew							
Cooling Method	Industrial air conditioning							
Rejecter Mode	Sound and light alarm, belt stops (Rejecter optional)							
Air Pressure	0.6 Mpa							
Power Supply	1.5kW							
Main Material	SUS304							
Surface Treatment	Mirror polish / Sand blasting							

### Note:

The technical parameter above namely is the result of sensitivity by inspecting only the test sample on the belt. The actual sensitivity would be affected according to the products being inspected.

# IP69K X-ray Inspection System



X-ray Inspection System takes advantages of the penetrating power of X-ray to detect contamination. It can achieve a full range of contaminants inspection including metallic, non-metallic contaminants (glass, ceramic, stone, bone, hard rubber, hard plastic, etc.). It can inspect metallic, non-metallic packaging and canned products, and the inspection effect will not be affected by temperature, humidity, salt content, etc.

IP69K X-ray machine is suitable for inspection of meat, sea food, wet products etc.

Recommended use of X-ray inspection systems

1. Not only metal contaminants, but other non-metals such as stones, ceramic, glass as well.
2. Aluminum film packaged food and metallic packaged food
3. High salinity food, such as pickles which has strong product effect
4. Canned food
5. High requirements for the inspection of SUS
6. Defect detection, such as tablet defect.

## **Main Advantages**

### **TIMA platform**

High Sensitivity and Accuracy  
Low Energy Consumption and Low Radiation  
Modularized Hardware Platform  
High Level Hygienic Design  
Excellent Image Processing Algorithm

### **High resolution detector**

4-5 Times better in exposure compared with standard 0.4mm detector.  
Higher sensitivity, longer service time, low radiation and maintenance cost.

## High IP protection level

IP69K, special solution for meat,seafood sector

## Updated software

Software with weight control function(optional)

Intelligent software

Auto-learning function

Remote-setting

## User-friendly

Big touch screen

Multiple language

Automatic monitoring interface

Ethernet and USB port

## Completed solution

Different configuration based on different requests

Various rejecter systems

## Parameters

Model	TXR-4080GP	TXR6080GP
X-ray Tube	MAX. 80kV, 350W	MAX. 80kV, 210W
Inspection Width	400mm	600mm(MAX)
Inspection Height	100mm	100mm(MAX)
Best Inspection Sensitivity	Stainless steel ballΦ0.3mm Stainless steel wireΦ0.2*2mm Glass/Ceramic:1.0mm	Stainless steel ballΦ0.6mm Stainless steel wireΦ0.4*2mm Glass/Ceramic:1.5mm
Conveyor Speed	90m/min	
O/S	Windows 7	
Protection Method	SUS Shield	
X-ray Leakage	< 1 μSv/h (CE Standard)	
IP Rate	IP66 (Under belt)	
Working Environment	Temperature: -10~40 C	Temperature: 0~40 C
	Humidity:30~90% no dew	
Cooling Method	Industrial air conditioning	
Rejecter Mode	48 tunnel air jet rejecter or 4/2/1 channels flap rejecter	72 tunnel air jet rejecter
Air Pressure	0.8Mpa	
Power Supply	1.5kW	
Main Material	SUS304	
Surface Treatment	Mirror polish/Sand blasting	

### Note:

The technical parameter above namely is the result of sensitivity by inspecting only the test sample on the belt. The actual sensitivity would be affected according to the products being inspected.

# Smart X-ray Inspection System



Smart X-ray inspection system is widely used in inspection of snacks products, metallic and non-metallic products.

Except for metal, hard impurities such as glass, stone, bones, etc. can also be detected. It is not affected by the packaging, temperature and humidity of the product.

The best inspection sensitivity(without product) reaches: SUS 0.5 mm, SUS Wire 0.3\*2 mm, Ceramic/Glass 1.5 mm.

## **Main Advantages:**

### **Wide range contaminants inspection**

Metal contaminants including Fe, Non-Fe and Sus.

Non-metal contaminants including Glass, Stone, Ceramic etc.

Product defects.

### **High IP protection level**

X-ray detector: IP65

Inspection tunnel: IP65

### **Competitive price, good performance**

Economic solution.

Good inspection results.

### **Easy installation and setting**

Remote setting is possible.

### **Compact design**

Easy to be inserted into current production line

Suitable for customers who have multi-production lines



**Completed solution**  
 Different configuration  
 Various rejecter systems

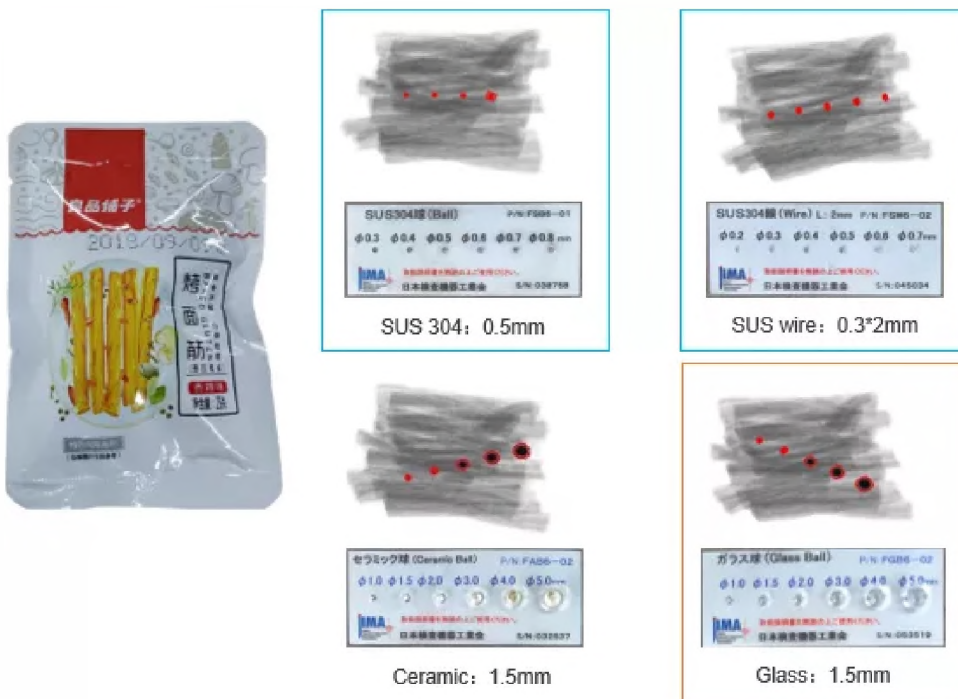
## Parameters

Model		TXE-1815	TXE-2815	TXE-3815
X-ray Tube		MAX. 80W/65kV		
Inspection Width		180mm	280mm	380mm
Inspection Height		150mm		
Best Inspection Ability		Stainless steel ball $\Phi$ 0.5mm Stainless steel wire $\Phi$ 0.3*2mm Glass/Ceramic ball $\Phi$ 1.5mm		
Conveyor Speed		5-90m/min		
O/S		Windows 7		
Protection Method		Soft curtain		
X-ray Leakage		< 1 $\mu$ Sv/h		
IP Rate		IP54 (IP65 Optional)		
Working Environment	Temperature	-10~40°C		0~40°C
	Humidity	30~90%, no dew		
Cooling Method		Industrial air conditioning		
Reject Mode		Sound and light alarm, belt stops (Rejecter optional)		
Air Pressure		0.8Mpa		
Power Supply		0.8kW		
Main Material		SUS304		
Surface Treatment		Brushed SUS		

**Note:**

The technical parameter above namely is the result of sensitivity by inspecting only the test sample on the belt. The actual sensitivity would be affected according to the products being inspected.

## External Dimensions



# Bottles, jars and cans X-ray Inspection System



With special design, suitable for inspection of cans, jars and bottles.  
Inclined downward X-ray, Dual-beam X-ray, Triple-beam X-ray, Splitted triple beam X-ray are available.

## Features

1. Easy connection with existed production line
2. Glass in glass, metal in metal detection
3. High capacity and good accuracy
4. Simultaneous inspection for contaminants and filling level
5. High-speed pusher rejecter
6. Good solution for canned product

## Main Advantage

### **High resolution detector**

4-5 Times better in exposure compared with standard 0.4mm detector.  
Higher sensitivity, longer service time, low radiation and maintenance cost.

### **Customized Intelligent Algorithm**

High sensitivity and stability

### **Fast rejecter system, big capacity**

High-speed push rejecter  
Multi-segment rejecter system  
Supporting high speed

### **Completed solution**

Different solutions based on different requests



## Updated software

Software with weight control function(optional)

Intelligent software

Auto-learning function

Remote-setting

## User-friendly

Big touch screen

Multiple language

Automatic monitoring interface

Ethernet and USB port

## Completed solution

Different configuration based on different requests

Various rejecter systems

## Parameters

Model	TXR-1630SO
X-ray Tube	MAX. 120kV, 480W
Max Detecting Width	160mm
Max Detecting Height	280mm
Best Inspection Ability	Stainless steel ballΦ0.5mm,Stainless steel wire Φ0.3*2mm Glass/Ceramic ball Φ1.5mm
Conveyor Speed	10-60m/min
O/S	Windows 7
Protection Method	Protective tunnel
X-ray Leakage	< 0.5 μSv/h
IP Rate	IP54 (Standard), IP65 (Optional)
Working Environment	Temperature: -10~40 C Humidity:30-90%, no dew
Cooling Method	Industrial air conditioning
Rejecter Mode	Push rejecter
Air Pressure	0.8Mpa
Power Supply	3.5kW
Main Material	SUS304
Surface Treatment	Mirror polish/ Sand blasting

### Note:

The technical parameter above namely is the result of sensitivity by inspecting only the test sample on the belt. The actual sensitivity would be affected according to the products being inspected.

# Intelligent Sealing, Stuffing, Leakage X-ray Inspection System



Lax sealing and material stuffing are the first of several stubborn issues in the processing of snack foods, causing "leak oil", flowing into the subsequent production line, polluting the product and causing short-term food deterioration.

Shanghai Techik launched the intelligent X-ray Inspection System, and could solve the unresolved problems of material clamping and oil leakage in aluminum foil packaging, plastic packaging, small bags, medium bags, vacuum packaging and etc.

Features:

1. Contaminants Detection
2. Oil Leakage and Stuffing Detection
3. Online Weighing
4. Visual Inspection
5. Flexible Solution
6. TIMA Platform

## **Main Advantages:**

### **Contaminants Detection**

All-round detection of small metal, non-metal foreign bodies and pollutants in the package. For example: metal, glass, stones and other malignant impurities; plastic flakes, mud, cable ties and other low-density pollutants.

### **Oil Leakage and Stuffing Detection**

Using high-speed high-definition TDI technology detector, the exposure effect is 8 times that of traditional detectors, which can detect and accurately reject the sealing quality of oil and bulk packaging. For example: oil leakage sealing, sealing with material pinched in bag mouth, oily juice contamination, etc.

## Online Weighing

At the same time of quality inspection, high-speed and high-precision weight compliance inspection and precise rejection can be realized, and the inspection accuracy can be as high as  $\pm 2\%$ . Overweight, underweight, empty bag, etc. can be inspected.

## Visual Inspection

Built-in Techik's independent research and development of the visual inspection system of Supercomputing, which can conduct quality compliance inspections on the appearance of product packaging. For example: wrinkles at the seal, skewed press edges, dirty oil stains, etc.

## Flexible Solution

Exclusive and complete solutions can be customized according to customer needs. For example, according to the size of large, medium and small bags, you can choose the corresponding detection plan, and you can also choose the air blowing or flap rejection method.

## TIMA Platform

It is another masterpiece based on the Techik TIMA platform, adhering to the production concept of food detection equipment. It integrates R&D concepts such as high precision, low energy consumption, low radiation, modular hardware, intelligent algorithms, scientific and technological appearance architecture, and high hygiene level.

## Parameters

Model	Standard TXR Series							
Standard	2480	4080	4080L	4080S	4080SL	4080SH	5080SH	6080SH
X-ray Tube	MAX.80kV, 150W	MAX.80kV, 210W		MAX. 80kV, 350W				
Inspection Width	240mm	400mm					500mm	600mm
Inspection Height	110mm	160mm	100mm	160mm	100mm	220mm	250mm	300mm
Best Inspection Sensitivity	Stainless steel ball $\Phi 0.3\text{mm}$ Stainless steel wire $\Phi 0.2*2\text{mm}$ Glass/Ceramic ball $\Phi 1.0\text{mm}$					Stainless steel ball $\Phi 0.4\text{mm}$ Stainless steel wire $\Phi 0.2*2\text{mm}$ Glass/Ceramic ball $\Phi 1.0\text{mm}$		
Conveyor Speed	5-60m/min					10-40m/min		
O/S	Windows 7							
Protection Method	Soft curtain							
X-ray Leakage	$< 1 \mu\text{Sv/h}$ (CE Standard)							
IP Rate	IP65 (Under belt)							
Working Environment	Temperature: $-10-40^\circ\text{C}$							
	Humidity: 30-90% no dew							
Cooling Method	Industrial air conditioning							
Rejecter Mode	Sound and light alarm, belt stops (Rejecter optional)							
Air Pressure	0.6 Mpa							
Power Supply	1.5kW							
Main Material	SUS304							
Surface Treatment	Mirror polish / Sand blasting							

### Note:

The technical parameter above namely is the result of sensitivity by inspecting only the test sample on the belt. The actual sensitivity would be affected according to the products being inspected.

# Intelligent Beans X-ray Inspection System



Bulk Product Green Beans Intelligent X-ray Inspection System.

The worm eye recognition inspection of red bean. Kidney bean can reach 60%-90% of net selection rate. Thin plastic, thin glass, mud, stones, ties, buttons, cigarette butts, embedded steel and other impurities can be screened and eliminated accurately and efficiently.

Machine components:

Vibration device + X-ray inspection system+32/48/72 air jet rejecter system

## **Main Advantages:**

### **Customized intelligent algorithm**

Most suitable solution for a certain product

### **Wider range contaminants inspection**

Thin plastic, thin glass, mud, stones, ties, buttons, cigarette butts, embedded steel

### **High resolution detector**

4-5 Times better in exposure compared with standard 0.4mm detector

Higher sensitivity, longer service time, low radiation and maintenance cost

### **High IP protection level**

X-ray detector: IP67

Inspection tunnel: IP67

### **Easy installation and setting**

X-ray is together with air rejecter system, easy to do installation.

Remote setting is possible.

### **Completed solution**

Different configuration based on different requests

Various rejecter systems

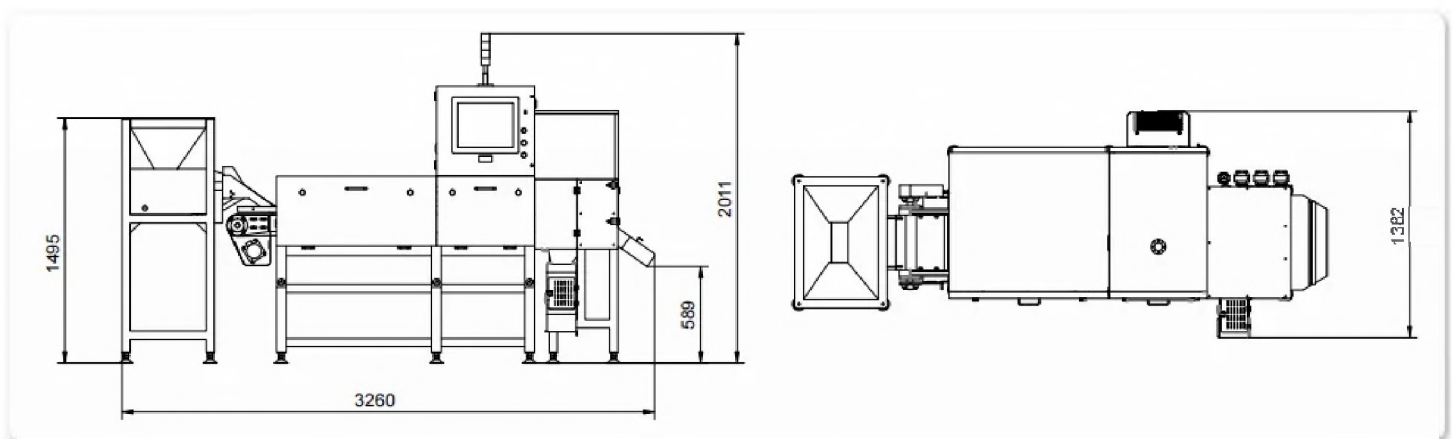
## Parameters

Model	TXR-4080GP	TXR6080GP
X-ray Tube	MAX. 80kV, 350W	MAX. 80kV, 210W
Inspection Width	400mm	600mm(MAX)
Inspection Height	100mm	100mm(MAX)
Best Inspection Sensitivity	Stainless steel ball $\Phi$ 0.3mm Stainless steel wire $\Phi$ 0.2*2mm Glass/Ceramic:1.0mm	Stainless steel ball $\Phi$ 0.6mm Stainless steel wire $\Phi$ 0.4*2mm Glass/Ceramic:1.5mm
Conveyor Speed	90m/min	
O/S	Windows 7	
Protection Method	SUS Shield	
X-ray Leakage	< 1 $\mu$ Sv/h (CE Standard)	
IP Rate	IP66 (Under belt)	
Working Environment	Temperature: -10~40 C	Temperature: 0~40 C
	Humidity:30~90% no dew	
Cooling Method	Industrial air conditioning	
Rejecter Mode	48 tunnel air jet rejecter or 4/2/1 channels flap rejecter	72 tunnel air jet rejecter
Air Pressure	0.8Mpa	
Power Supply	1.5kW	
Main Material	SUS304	
Surface Treatment	Mirror polish/Sand blasting	

### Note:

The technical parameter above namely is the result of sensitivity by inspecting only the test sample on the belt. The actual sensitivity would be affected according to the products being inspected.

## External Dimensions



# Bulk Products X-ray Inspection System



Bulk Products X-ray Inspection System is widely used for inspection of pre-packaging product like nuts, grains, corns, raisins, sunflower seeds, bean, frozen fruits, cashew etc.

Contaminants: metal contaminants, non-metal contaminants including glass, stone, ceramic, hard rubber, insects, stick, mould, wormhole, shell, germination, etc.

Bulk Products X-ray Inspection System Machine components:  
Vibration device + X-ray inspection system+32/48/72 air jet rejecter system

## **Main Advantages:**

### **High resolution detector**

4-5 Times better in exposure compared with standard 0.4mm detector.  
Higher sensitivity, longer service time, low radiation and maintenance cost.

### **High IP protection level**

X-ray detector: IP67  
Inspection tunnel: IP67

### **32/48/72 air jet rejecter system**

Minimum quantity of waste

### **Easy installation and setting**

X-ray is together air rejecter system, easy to do installation.  
Remote setting is possible.

### **Completed solution**

Different configuration based on different requests  
Various rejecter systems



## High configuration is optional

Intelligent software is optional

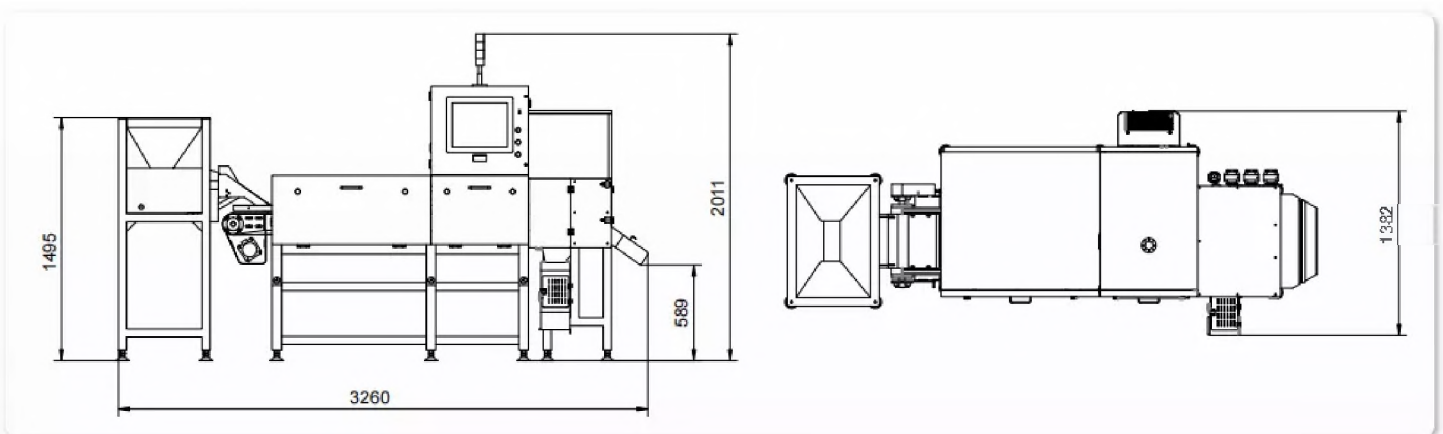
## Parameters

Model	TXR-4080LP	TXR-4080P
X-ray Tube	MAX. 80kV, 210W	
Inspection Width	MAX. 80kV, 210W	
Inspection Height	100mm(MAX)	160mm(MAX)
Best Inspection Sensitivity	Stainless steel ball $\Phi 0.3\text{mm}$ Stainless steel wire $\Phi 0.2 \times 2\text{mm}$ Glass/Ceramic: 1.0mm	
Conveyor Speed	60m/min	
O/S	Windows 7	
Protection Method	SUS Shield	
X-ray Leakage	< 1 $\mu\text{Sv/h}$ (CE Standard)	
IP Rate	IP66 (Under belt)	
Working Environment	Temperature: 0~40°C	
	Humidity: 30~90% no dew	
Cooling Method	Industrial air conditioning	
Rejecter Mode	32 tunnel air jet rejecter or 4/2/1 channels flap rejecter	
Air Pressure	0.8Mpa	
Power Supply	1.5kW	
Main Material	SUS304	
Surface Treatment	Mirror polish/Sand blasting	

### Note:

The technical parameter above namely is the result of sensitivity by inspecting only the test sample on the belt. The actual sensitivity would be affected according to the products being inspected.

## External Dimensions





# Professional Wholesale Pine Nuts Food X-ray Machine Manufacturers



Techik is a professional pine nuts food x-ray inspection machine manufacturer. Techik Pine Nuts Food X-ray Machines are applied in pre-packaging products like nuts, grains, corns, raisins, sunflower seeds, bean, frozen fruits, cashew etc.

Either metal contaminants or non-metal contaminants can be detected and rejected by Techik Pine Nuts Food X-ray Machines. As shown in the above video, the Pine Nuts Food X-ray Inspection Machine inspected and rejected light bulb, glass, plastic, cable tie, can parts, cigarette butts and etc from the pine nuts.

In addition to the above mentioned contaminants, Pine Nuts Food X-ray Inspection Machine (Bulk Food X-ray Inspection System) can also effectively find out and reject stone, ceramic, hard rubber, insects, stick, mould, wormhole, shell, germination, etc.

Recommended use of X-ray inspection systems

1. Not only metal contaminants, but other non-metals like stones, glass as well
2. Aluminum film packaged food and metallic packaged food
3. High salinity food, such as pickles which has strong product effect
4. Canned food
5. High requirements for the inspection of SUS
6. Defect detection, such as tablet defect

## **Main Advantages:**

### **High resolution detector**

4-5 Times better in exposure compared with standard 0.4mm detector.  
Higher sensitivity, longer service time, low radiation and maintenance cost.

## High IP protection level

X-ray detector: IP67

Inspection tunnel: IP67

## 32/48/72 air jet rejecter system

Minimum quantity of waste

## High configuration is optional

Intelligent software is optional

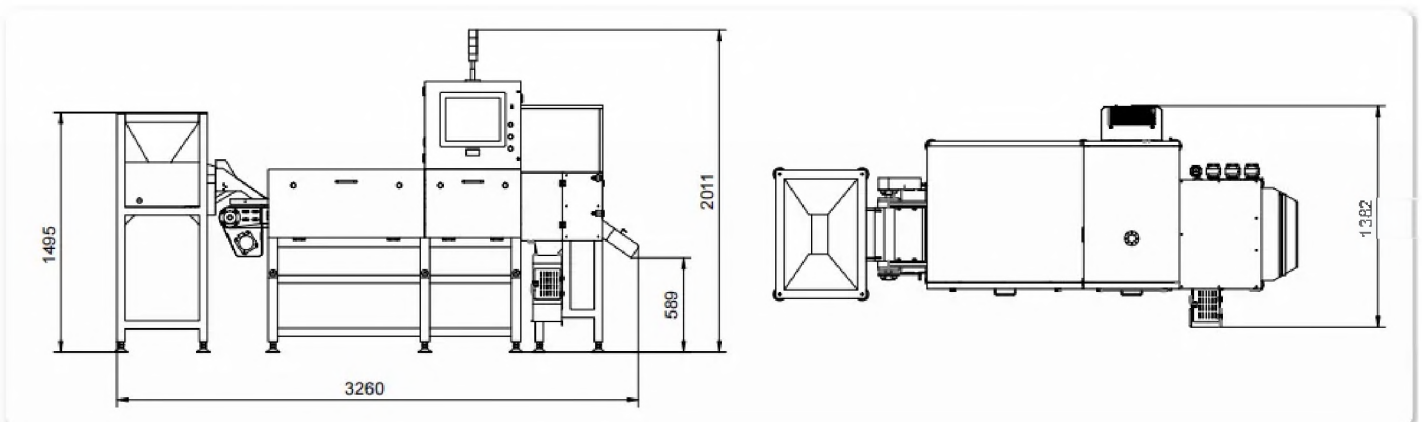
## Parameters

Model	TXR-4080LP	TXR-4080P
X-ray Tube	MAX. 80kV, 210W	
Inspection Width	MAX. 80kV, 210W	
Inspection Height	100mm(MAX)	160mm(MAX)
Best Inspection Sensitivity	Stainless steel ballΦ0.3mm Stainless steel wireΦ0.2*2mm Glass/Ceramic:1.0mm	
Conveyor Speed	60m/min	
O/S	Windows 7	
Protection Method	SUS Shield	
X-ray Leakage	< 1 μSv/h (CE Standard)	
IP Rate	IP66 (Under belt)	
Working Environment	Temperature: 0~40℃ Humidity:30~90% no dew	
Cooling Method	Industrial air conditioning	
Rejecter Mode	32 tunnel air jet rejecter or 4/2/1 channels flap rejecter	
Air Pressure	0.8Mpa	
Power Supply	1.5kW	
Main Material	SUS304	
Surface Treatment	Mirror polish/Sand blasting	

### Note:

The technical parameter above namely is the result of sensitivity by inspecting only the test sample on the belt. The actual sensitivity would be affected according to the products being inspected.

## External Dimensions



# High-Configuration Bulk Products X-ray Inspection System



High-Configuration Bulk Products X-ray Inspection System is widely used for pre-packaging product like nuts, grains, corns, raisins, sunflower seeds, bean, frozen fruits, cashew.

Contaminants: metal contaminants, non-metal contaminants including glass, stone, ceramic, hard rubber, insects, stick, mould, wormhole, shell, germination, etc.

Machine components:

Vibration device + X-ray inspection system + 32/48/72 air jet rejecter system

Vibration device to make sure material pass through the X-ray steadily and even, increasing the inspection sensitivity and rejecter accuracy.

X-ray inspection system with unique software, to make sure contaminants inspection.

32/48/72 air jet rejecter system, to make sure minimum quantity of waste.

X-ray inspection system and air jet rejecter system are integrated in one frame, eventually achieving easy installation and parameter setting.

## **Main Advantages:**

### **Wider range contaminants inspection**

Hard rubber, insects, stick, mould, wormhole, shell, germination, etc are possible.

### **High resolution detector**

4-5 Times better in exposure compared with standard 0.4mm detector.

With high resolution detector, low power generator is required, higher sensitivity, longer service time, low radiation and maintenance cost.

## High IP protection level

X-ray detector: IP67

Inspection tunnel: IP67

## High sensitivity and stability, big capacity

Max speed supports 120m/min

## Easy installation and setting

X-ray, together with air rejecter system, are easy to be installed.

Remote setting is possible

## Completed solution

Different configuration based on different requests

Various rejecter systems

## Parameters

Model	TXR-4080P	TXR-4080GP	TXR6080SGP
X-ray Generator	MAX. 80kV, 210W	MAX. 80kV, 350W	MAX. 80kV, 350W
Inspection Width	400mm(MAX)	400mm	600mm(MAX)
Inspection Height	100mm(MAX)	100mm	100mm(MAX)
Best Inspection Sensitivity	Stainless steel ballΦ0.3mm Stainless steel wireΦ0.2*2mm Glass/Ceramic:1.0mm	Stainless steel ballΦ0.3mm Stainless steel wireΦ0.2*2mm Glass/Ceramic:1.0mm	Stainless steel ballΦ0.6mm Stainless steel wireΦ0.4*2mm Glass/Ceramic:1.5mm
Conveyor Speed	60m/min	90m/min	120m/min
O/S	Windows XP	Windows 7	
Protection Method	SUS Shield		
X-ray Leakage	< 1 μSwh (CE Standard)		
IP Rate	IP66 (Under belt)		
Working Environment	Temperature: 0~40 C	Temperature: -10~40 C	Temperature: 0~40 C
	Humidity:30~90% no dew		
Cooling Method	Industrial air conditioning		
Rejecter Mode	32 tunnel air jet rejecter or 4/2/1 channels flap rejecter	48 tunnel air jet rejecter or 4/2/1 channels flap rejecter	72 tunnel air jet rejecter
Air Pressure	0.8Mpa		
Power Supply	1.5kW		
Main Material	SUS304		
Surface Treatment	Mirror polish/Sand blasting		

### Note:

The technical parameter above namely is the result of sensitivity by inspecting only the test sample on the belt. The actual sensitivity would be affected according to the products being inspected.

# Standard Single Energy X-ray Food Foreign Body Detector



Making use of the penetrating power of X-ray to detect contamination, Techik Standard Single Energy X-ray Food Foreign Body Detector can achieve a full range of contaminants inspection including metallic, non-metallic contaminants (glass, ceramic, stone, bone, hard rubber, hard plastic, etc.).

Recommended use of X-ray inspection systems

1. Not only metal contaminants, but other non-metals such as stones, ceramic, glass as well.
2. Aluminum film packaged food and metallic packaged food
3. High salinity food, such as pickles which has strong product effect
4. Canned food
5. High requirements for the inspection of SUS
6. Defect detection, such as tablet defect

## **Main Advantages:**

### **High resolution detector**

4-5 times better in exposure compared with standard 0.4mm detector

With high resolution detector, low power generator is required, higher sensitivity, longer service time, low radiation and maintenance cost.

### **High IP protection level**

X-ray detector: IP67

Inspection tunnel: IP67

IP69K for meat and seafood products

## Updated software

Intelligent software for plastic, shell etc

Auto-learning function

Remote-setting

## Completed solution

Different configuration based on different requests

Various rejecter systems

## Parameters

Model	Standard TXR Series							
Standard	2480	4080	4080L	4080S	4080SL	4080SH	5080SH	6080SH
X-ray Tube	MAX.80kV, 150W	MAX.80kV, 210W		MAX. 80kV, 350W				
Inspection Width	240mm	400mm					500mm	600mm
Inspection Height	110mm	160mm	100mm	160mm	100mm	220mm	250mm	300mm
Best Inspection Sensitivity	Stainless steel ball $\Phi$ 0.3mm Stainless steel wire $\Phi$ 0.2*2mm Glass/Ceramic ball $\Phi$ 1.0mm					Stainless steel ball $\Phi$ 0.4mm Stainless steel wire $\Phi$ 0.2*2mm Glass/Ceramic ball $\Phi$ 1.0mm		
Conveyor Speed	5-60m/min					10-40m/min		
O/S	Windows 7							
Protection Method	Soft curtain							
X-ray Leakage	< 1 $\mu$ Swh (CE Standard)							
IP Rate	IP65 (Under belt)							
Working Environment	Temperature: -10-40 C							
	Humidity: 30-90% no dew							
Cooling Method	Industrial air conditioning							
Rejecter Mode	Sound and light alarm, belt stops (Rejecter optional)							
Air Pressure	0.6 Mpa							
Power Supply	1.5kW							
Main Material	SUS304							
Surface Treatment	Mirror polish / Sand blasting							

### Note:

The technical parameter above namely is the result of sensitivity by inspecting only the test sample on the belt. The actual sensitivity would be affected according to the products being inspected.



# Food X-ray Inspection Equipment



Food X-ray Inspection Equipment takes advantages of the penetrating power of X-ray to detect contamination. It can achieve a full range of contaminants inspection including metallic, non-metallic contaminants (glass, ceramic, stone, bone, hard rubber, hard plastic, etc.). It can inspect metallic, non-metallic packaging and canned products, and the inspection result will not be affected by temperature, humidity, salt content, etc.

Recommended use of X-ray inspection systems

1. Not only metal contaminants, but other non-metals such as stones, ceramic, glass as well.
2. Aluminum film packaged food and metallic packaged food
3. High salinity food, such as pickles which has strong product effect
4. Canned food
5. High requirements for the inspection of SUS
6. Defect detection, such as tablet defect.

## **Main Advantages:**

### **TIMA platform**

High Sensitivity and Accuracy  
Low Energy Consumption and Low Radiation  
Modularized Hardware Platform  
High Level Hygienic Design  
Excellent Image Processing Algorithm

### **High resolution detector**

4-5 times better in exposure compared with standard 0.4mm detector  
With high resolution detector, low power generator is required, higher sensitivity, longer service time, low radiation and maintenance cost.



## High IP protection level

X-ray detector: IP67

Inspection tunnel: IP67

IP69K for meat and seafood products

## Updated software

Intelligent software for plastic, shell etc

Auto-learning function

Remote-setting

## User-friendly

Big touch screen

Multiple language

Automatic monitoring interface

Ethernet and USB port

## Completed solution

Different configuration based on different requests

Various rejecter systems

## Parameters

Model	Standard TXR Series							
Standard	2480	4080	4080L	4080S	4080SL	4080SH	5080SH	6080SH
X-ray Tube	MAX.80kV, 150W	MAX.80kV, 210W		MAX. 80kV, 350W				
Inspection Width	240mm	400mm					500mm	600mm
Inspection Height	110mm	160mm	100mm	160mm	100mm	220mm	250mm	300mm
Best Inspection Sensitivity	Stainless steel ball $\Phi$ 0.3mm Stainless steel wire $\Phi$ 0.2*2mm Glass/Ceramic ball $\Phi$ 1.0mm					Stainless steel ball $\Phi$ 0.4mm Stainless steel wire $\Phi$ 0.2*2mm Glass/Ceramic ball $\Phi$ 1.0mm		
Conveyor Speed	5-80m/min					10-40m/min		
O/S	Windows 7							
Protection Method	Soft curtain							
X-ray Leakage	< 1 $\mu$ Sv/h (CE Standard)							
IP Rate	IP65 (Under belt)							
Working Environment	Temperature: -10~40°C							
	Humidity: 30-90% no dew							
Cooling Method	Industrial air conditioning							
Rejecter Mode	Sound and light alarm, belt stops (Rejecter optional)							
Air Pressure	0.6 Mpa							
Power Supply	1.5kW							
Main Material	SUS304							
Surface Treatment	Mirror polish / Sand blasting							

### Note:

The technical parameter above namely is the result of sensitivity by inspecting only the test sample on the belt. The actual sensitivity would be affected according to the products being inspected.

# Single Beam Three Views Can Jar Bottle Food X-ray Inspection Systems Manufacturers



With special design, Single Beam Three Views Can Jar Bottle Food X-ray Inspection Systems are suitable for inspection of cans, jars and bottles.

## **Single Beam Three Views Can Jar Bottle Food X-ray Inspection Systems Features**

Easy connection with existed production line  
Glass in glass, metal in metal detection  
High capacity and good accuracy  
Simultaneous inspection for contaminants and filling level  
High-speed pusher rejecter  
God solution for canned product

## **Main Advantages:**

Adjustable inspection range based on different dimensions of cans and bottles.  
It can achieve the inspection of filling levels.  
It can achieve better performance for contaminants sinking at the bottom part of the cans and bottles.  
High speed, Max speed can reach 90m/min.

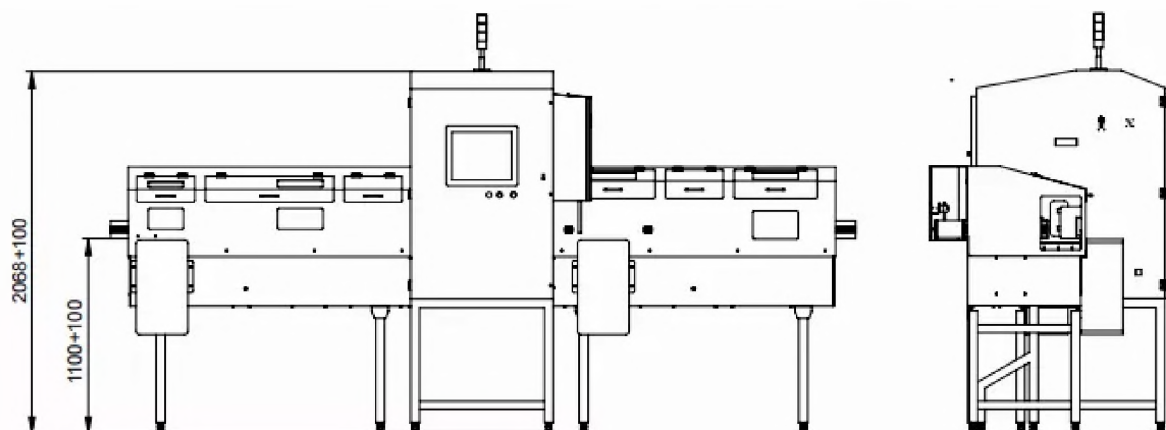
## Parameters

Model	TXR-1630SH
X-ray Tube	MAX, 120kV, 480W
Max Detecting Width	160mm
Max Detecting Height	260mm
Best Inspection Ability	Stainless steel ball $\Phi$ 0,5mm Stainless steel wire $\Phi$ 0,3*2mm Glass/Ceramic ball $\Phi$ 1,5mm
Conveyor Speed	10-60m/min
O/S	Windows 7
Protection Method	Protective tunnel
X-ray Leakage	< 0.5 $\mu$ Svh
IP Rate	IP54 (Standard), IP65 (optional)
Working Environment	Temperature: -10~40°C Humidity:30~90%, no dew
Cooling Method	Industrial air conditioning
Rejecter Mode	Push rejecter
Air Pressure	0,8Mpa
Power Supply	3,5kW
Main Material	SUS304
Surface Treatment	Mirror polished/Sand blasted

### *Note:*

The technical parameter above namely is the result of sensitivity by inspecting only the test sample on the belt. The actual sensitivity would be affected according to the products being inspected.

## External Dimensions



# Dual-Beam X-Ray Inspection System for Bottles, Jars and Cans



Food in cans, bottles, jars, boxes, etc.

Dual-Beam X-Ray Inspection System for Bottles, Jars and Cans Features

1. Easy connection with existed production line
2. Glass in glass, metal in metal detection
3. High capacity and good accuracy
4. Simultaneous inspection for contaminants and filling level
5. High-speed pusher rejecter
6. Good solution for canned product

## **Main Advantages:**

### **Two sets of imaging systems**

Double angle cross inspection  
Avoid blind inspection

### **Intelligent partition**

Different parts can be detected with the best sensitivity.  
Multiple functions  
Simultaneous detection of contaminants, bottle cap, filling level and damaged packaging

### **High resolution detector**

4-5 Times better in exposure compared with standard 0.4mm detector.  
Higher sensitivity, longer service time, low radiation and maintenance cost.

## Customized intelligent algorithm

High sensitivity and stability

## Fast rejecter system, big capacity

High-speed push rejecter

Multi-segment rejecter system

Supporting high speed

## User-friendly

Big touch screen

Multiple language

Automatic monitoring interface

Ethernet and USB port

## Parameters

Model	TXR-2080BDX
X-ray Generator	MAX. 120kV, 480W(two for each)
Inspection Width	160mm
Inspection Height	260mm
Best Inspection Sensitivity	Stainless steel ball $\Phi$ 0.5mm, Stainless steel wire $\Phi$ 0.3*2mm Glass/Ceramic ball $\Phi$ 2.0mm
Conveyor Speed	10-60m/min
O/S	Windows 7
Protection Method	Protective tunnel
X-ray Leakage	< 0.5 $\mu$ Sv/h
IP Rate	IP54 (Standard), IP65 (optional)
Working Environment	Temperature: -10~40 $^{\circ}$ C Humidity:30~90%, no dew
Cooling Method	Industrial air conditioning
Rejecter Mode	Push rejecter
Air Pressure	0.8Mpa
Power Supply	4kW
Main Material	SUS304
Surface Treatment	Mirror polish/ Sand blasting

### Note:

The technical parameter above namely is the result of sensitivity by inspecting only the test sample on the belt. The actual sensitivity would be affected according to the products being inspected.

# Sunflower Seeds X-Ray Inspection System



Bulk Product Sunflower Seeds Intelligent X-ray Inspection System.

Contaminants: sunflower plates, broken, empty, wormholes, wooden sticks, cigarette, stone, thin glass pieces, metal contaminants, etc.

Machine components:

Vibration device + X-ray inspection system+32/48/72 air jet rejecter system

## **Main Advantages:**

### **Customized intelligent algorithm**

Most suitable solution for a certain product.

### **Wider range contaminants inspection**

Thin plastic, thin glass, mud, stones, ties, buttons, cigarette butts, embedded steel

### **High resolution detector**

4-5 Times better in exposure compared with standard 0.4mm detector  
Higher sensitivity, longer service time, low radiation and maintenance cost

### **High IP protection level**

X-ray detector: IP67  
Inspection tunnel: IP67

### **Easy installation and setting**

X-ray is together air rejecter system, easy to do installation.  
Remote setting is possible.

### **Completed solution**

Different configuration based on different requests  
Various rejecter systems



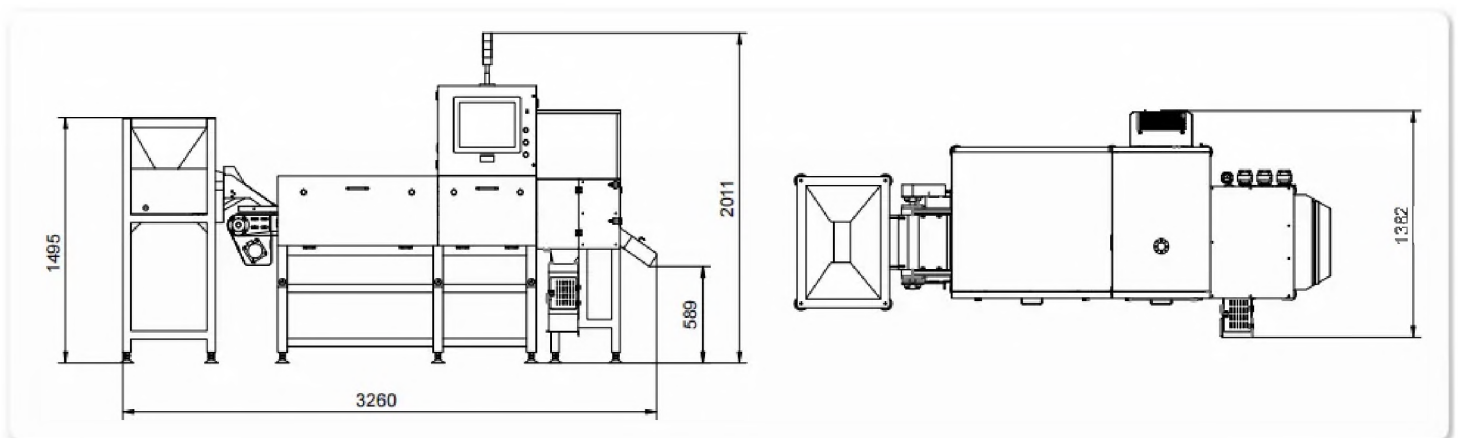
## Parameters

Model	TXR-4080GP	TXR6080GP
X-ray Tube	MAX. 80kV, 350W	MAX. 80kV, 210W
Inspection Width	400mm	600mm(MAX)
Inspection Height	100mm	100mm(MAX)
Best Inspection Sensitivity	Stainless steel ball $\Phi$ 0.3mm Stainless steel wire $\Phi$ 0.2*2mm Glass/Ceramic:1.0mm	Stainless steel ball $\Phi$ 0.6mm Stainless steel wire $\Phi$ 0.4*2mm Glass/Ceramic: 1.5mm
Conveyor Speed	90m/min	
O/S	Windows 7	
Protection Method	SUS Shield	
X-ray Leakage	< 1 $\mu$ Sv/h (CE Standard)	
IP Rate	IP66 (Under belt)	
Working Environment	Temperature: -10~40 C	Temperature: 0~40 C
	Humidity:30~90% no dew	
Cooling Method	Industrial air conditioning	
Rejecter Mode	48 tunnel air jet rejecter or 4/2/1 channels flap rejecter	72 tunnel air jet rejecter
Air Pressure	0.8Mpa	
Power Supply	1.5kW	
Main Material	SUS304	
Surface Treatment	Mirror polish/Sand blasting	

### Note:

The technical parameter above namely is the result of sensitivity by inspecting only the test sample on the belt. The actual sensitivity would be affected according to the products being inspected.

## External Dimensions





# Intelligent Pepper Single Belt Color Sorter



The Optic Sorting System is a device for automatically sorting out the defective material by using the optoelectronic detecting technology according to the difference of the optical characteristics of the materials.

Intelligent Belt Type Color Sorter Features:

1. Equipped with a high-definition 5400 pixel full-color sensor, high-definition snapshot function, perfect restoration of the true color of the material, 8 times magnification of photos, ultra-high-speed linear scanning speed, improvement of the ability to accurately identify little defects.
2. The intelligent multiple-type easy-sorting algorithm system enhances parallel analysis and processing capabilities, with one-key setting of sorting modes, which can realize multiple color independent sorting, positive sorting, reverse sorting, multiple sorting, etc., so eventually achieving the durable and stable sorting with more prominent effect.
3. High-brightness LED cold light source, shadowless lighting, to ensure stable and durable lighting environment.
4. Efficient and stable transmission system, convenient for belt replacement, good for protecting fragile materials, with wide range of use and high net selection rate.

## **Main Advantages:**

### **Intelligent Setting**

1. Intelligent setting: simple setting, completed within 5 minutes
2. Intelligent algorithm, with accurate and stable effect
3. DIY your own selection classification, done by one click
4. 180 rotating operation display, flexible operation in different positions

### **Software Advantage**

1. Intelligent monitoring of background data, remote setting & bug locking
2. Data visualization, storage integration, and one-click replacement of popular programs.
3. Big data, cloud storage, free download

## Hardware Advantage

1. High-definition 5400 pixel full-color sensor
2. High-brightness LED cold light source
3. High-frequency solenoid valve, intelligent algorithm tracking, precise rejection
4. Customized belt, stable conveying, no bullets, and anti-breaking

## Parameters

Technical Index List						
Channel Number	Total Power	Voltage	Air Pressure	Air Consumption	Dimension (L*D*H)(mm)	Weight
63	1.5 kW	180 ~240V 50Hz	0.6 ~0.8MPa	≤1.2 m <sup>3</sup> /min	3780x1270x2000	950 kg
126	2.0 kW			≤2.0 m <sup>3</sup> /min	3780x1580x2000	1100 kg
189	2.5 kW			≤2.5 m <sup>3</sup> /min	3780x1890x2000	1250 kg
252	3.0 kW			≤3.0 m <sup>3</sup> /min	3780x2200x2000	1400 kg
252	3.0 kW			≤3.0 m <sup>3</sup> /min	4950x1800x2400	2050 kg
504	4.0 kW			≤4.0 m <sup>3</sup> /min	4950x2420x2400	2650 kg

### Note:

- This parameter takes peanuts as an example (the impurity content is 2%), and the above parameter indicators may vary due to different materials and impurity content.
- If the product is updated without notice, the actual machine shall prevail.

# Multifunction Color Sorter



The Optic sorting machine is a device for automatically sorting out the defective material by using the optoelectronic detecting technology according to the difference of the optical characteristics of the materials.

## Standard Version Multifunction Color Sorter Features

1. Equipped with a high-definition 5400 pixel full-color sensor, high-definition snapshot function, perfect restoration of the true color of the material, 8 times magnification of photos, ultra-high-speed linear scanning speed, improvement of the ability to accurately identify little defects.
2. The intelligent multiple-type easy-sorting algorithm system enhances parallel analysis and processing capabilities, with one-key setting of sorting modes, which can realize multiple color independent sorting, positive sorting, reverse sorting, multiple sorting, etc., so eventually achieving the durable and stable sorting with more prominent effect.
3. High-brightness LED cold light source, shadowless lighting, to ensure stable and durable lighting environment

## **Main Advantages:**

### **Intelligent Setting**

1. Intelligent setting: simple setting, completed within 5 minutes
2. Intelligent algorithm, with accurate and stable effect
3. DIY your own selection classification, done by one click

### **Hardware Advantage**

1. High-definition 5400 pixel full-color sensor
2. High-brightness LED cold light source
3. High-frequency solenoid valve, intelligent algorithm tracking, precise rejection
4. Optional smart dust collection system, which can automatically clean up the dust in the feed and prolong the life of the equipment

## Software Advantage

1. Intelligent monitoring of background data, remote setting & bug locking
2. Data visualization, storage integration, and one-click replacement of popular programs
3. Big data, cloud storage, free download

## Parameters

Technical Index List						
Channel Number	Total Power	Voltage	Air Pressure	Air Consumption	Dimension (L*D*H)(mm)	Weight
3 × 63	2.0 kW	180 ~ 240V, 50HZ	0.6 ~ 0.8MPa	≤2.0 m <sup>3</sup> /min	1680x1600x2020	750 kg
4 × 63	2.5 kW			≤2.4 m <sup>3</sup> /min	1990x1600x2020	900 kg
5 × 63	3.0 kW			≤2.8 m <sup>3</sup> /min	2230x1600x2020	1200 kg
6 × 63	3.4 kW			≤3.2 m <sup>3</sup> /min	2610x1600x2020	1400 kg
7 × 63	3.8 kW			≤3.5 m <sup>3</sup> /min	2970x1600x2040	1600 kg
8 × 63	4.2 kW			≤4.0 m <sup>3</sup> /min	3280x1600x2040	1800 kg
10 × 63	4.8 kW			≤4.8 m <sup>3</sup> /min	3590x1600x2040	2200 kg
12 × 63	5.3 kW			≤5.4 m <sup>3</sup> /min	4290x1600x2040	2600 kg

### Note:

- This parameter takes peanuts as an example (the impurity content is 2%), and the above parameter indicators may vary due to different materials and impurity content.
- If the product is updated without notice, the actual machine shall prevail.

# Intelligent Belt Type Color Sorter



The Optic Sorting System is a device for automatically sorting out the defective material by using the optoelectronic detecting technology according to the difference of the optical characteristics of the materials.

Intelligent Belt Type Color Sorter Features:

1. Equipped with a high-definition 5400 pixel full-color sensor, high-definition snapshot function, perfect restoration of the true color of the material, 8 times magnification of photos, ultra-high-speed linear scanning speed, improvement of the ability to accurately identify little defects.
2. The intelligent multiple-type easy-sorting algorithm system enhances parallel analysis and processing capabilities, with one-key setting of sorting modes, which can realize multiple color independent sorting, positive sorting, reverse sorting, multiple sorting, etc., so eventually achieving the durable and stable sorting with more prominent effect.
3. High-brightness LED cold light source, shadowless lighting, to ensure stable and durable lighting environment.
4. Efficient and stable transmission system, convenient for belt replacement, good for protecting fragile materials, with wide range of use and high net selection rate.

## **Main Advantages:**

### **Intelligent Setting**

1. Intelligent setting: simple setting, completed within 5 minutes
2. Intelligent algorithm, with accurate and stable effect
3. DIY your own selection classification, done by one click
4. 180 rotating operation display, flexible operation in different positions

### **Software Advantage**

1. Intelligent monitoring of background data, remote setting & bug locking
2. Data visualization, storage integration, and one-click replacement of popular programs
3. Big data, cloud storage, free download

## Hardware Advantage

1. High-definition 5400 pixel full-color sensor
2. High-brightness LED cold light source
3. High-frequency solenoid valve, intelligent algorithm tracking, precise rejection
4. Customized belt, stable conveying, no bullets, and anti-breaking

## Parameters

Technical Index List						
Channel Number	Total Power	Voltage	Air Pressure	Air Consumption	Dimension (L*D*H)(mm)	Weight
63	1.5 kW	180 ~ 240V 50Hz	0.6 ~ 0.8MPa	≤1.2 m <sup>3</sup> /min	3780x1270x2000	950 kg
126	2.0 kW			≤2.0 m <sup>3</sup> /min	3780x1580x2000	1100 kg
189	2.5 kW			≤2.5 m <sup>3</sup> /min	3780x1890x2000	1250 kg
252	3.0 kW			≤3.0 m <sup>3</sup> /min	3780x2200x2000	1400 kg
252	3.0 kW			≤3.0 m <sup>3</sup> /min	4950x1800x2400	2050 kg
504	4.0 kW			≤4.0 m <sup>3</sup> /min	4950x2420x2400	2650 kg

**Note:**

- This parameter takes peanuts as an example (the impurity content is 2%), and the above parameter indicators may vary due to different materials and impurity content.
- If the product is updated without notice, the actual machine shall prevail.



# Color Sorter and X-ray Inspection System Intelligent Production Line for Pumpkin Seeds



1. Color Sorter and X-ray Inspection System Intelligent Production Line for Pumpkin Seeds, aiming to achieve labor free production line.
2. This solution is a combination of color sorter and X-ray inspection system, which can reach a wider ranger of contaminants.
3. Contaminants: color differences, broken, wormholes, empty, wooden sticks, cigarette, stone, thin glass pieces, small metal contaminants etc.

## **Main Advantages:**

### **Intelligent setting**

1. Intelligent setting: simple setting, completed within 5 minutes
2. Intelligent algorithm, with accurate and stable effect
3. DIY your own selection classification, done by one click

### **Hardware advantage**

1. High-definition 5400 pixel full-color sensor
2. High-brightness LED cold light source
3. High-frequency solenoid valve, intelligent algorithm tracking, precise rejection
4. Optional smart dust collection system, which can automatically clean up the dust in the feed and prolong the life of the equipment

### **Software advantage**

1. Intelligent monitoring of background data, remote setting & bug locking
2. Data visualization, storage integration, and one-click replacement of popular programs
3. Big data, cloud storage, free download



## High resolution detector

1. 4-5 Times better in exposure compared with standard 0.4mm detector
2. Higher sensitivity, longer service time, low radiation and maintenance cost

## Easy installation

1. Easy installation and setting
2. Remote setting is possible

## Completed solution

1. Different configuration based on different requests
2. Various rejecter systems

## Parameters

Technical Index List						
Channel Number	Total Power	Voltage	Air Pressure	Air Consumption	Dimension (L*D*H)(mm)	Weight
3 × 63	2.0 kW	180~240V, 50HZ	0.6~0.8MPa	≤2.0 m <sup>3</sup> /min	1680x1600x2020	750 kg
4 × 63	2.5 kW			≤2.4 m <sup>3</sup> /min	1990x1600x2020	900 kg
5 × 63	3.0 kW			≤2.8 m <sup>3</sup> /min	2230x1600x2020	1200 kg
6 × 63	3.4 kW			≤3.2 m <sup>3</sup> /min	2610x1600x2020	1400 kg
7 × 63	3.8 kW			≤3.5 m <sup>3</sup> /min	2970x1600x2040	1600 kg
8 × 63	4.2 kW			≤4.0 m <sup>3</sup> /min	3280x1600x2040	1800 kg
10 × 63	4.8 kW			≤4.8 m <sup>3</sup> /min	3590x1600x2040	2200 kg
12 × 63	5.3 kW			≤5.4 m <sup>3</sup> /min	4290x1600x2040	2600 kg

### Note:

- This parameter takes peanuts as an example (the impurity content is 2%), and the above parameter indicators may vary due to different materials and impurity content.
- If the product is updated without notice, the actual machine shall prevail.

Model	TXR-4080GP	TXR6080GP
X-ray Tube	MAX. 80kV, 350W	MAX. 80kV, 210W
Inspection Width	400mm	600mm(MAX)
Inspection Height	100mm	100mm(MAX)
Best Inspection Sensitivity	Stainless steel ballΦ0.3mm Stainless steel wireΦ0.2*2mm Glass/Ceramic:1.0mm	Stainless steel ballΦ0.6mm Stainless steel wireΦ0.4*2mm Glass/Ceramic:1.5mm
Conveyor Speed	90m/min	
O/S	Windows 7	
Protection Method	SUS Shield	
X-ray Leakage	< 1 μSv/h (CE Standard)	
IP Rate	IP66 (Under belt)	
Working Environment	Temperature: -10~40 °C	Temperature: 0~40 °C
	Humidity:30~90% no dew	
Cooling Method	Industrial air conditioning	
Rejecter Mode	48 tunnel air jet rejecter or 4/2/1 channels flap rejecter	72 tunnel air jet rejecter
Air Pressure	0.8Mpa	
Power Supply	1.5kW	
Main Material	SUS304	
Surface Treatment	Mirror polish/Sand blasting	

### Note:

The technical parameter above namely is the result of sensitivity by inspecting only the test sample on the belt. The actual sensitivity would be affected according to the products being inspected.

# Belt Color Sorter



The Optic Sorting System is a device for automatically sorting out the defective material by using the optoelectronic detecting technology according to the difference of the optical characteristics of the materials.

## Features

1. Equipped with a high-definition 5400 pixel full-color sensor, high-definition snapshot function, perfect restoration of the true color of the material, 8 times magnification of photos, ultra-high-speed linear scanning speed, improvement of the ability to accurately identify little defects.
2. The intelligent multiple-type easy-sorting algorithm system enhances parallel analysis and processing capabilities, with one-key setting of sorting modes, which can realize multiple color independent sorting, positive sorting, reverse sorting, multiple sorting, etc., so eventually achieving the durable and stable sorting with more prominent effect.
3. High-brightness LED cold light source, shadowless lighting, to ensure stable and durable lighting environment.
4. Efficient and stable transmission system, convenient for belt replacement, good for protecting fragile materials, with wide range of use and high net selection rate.

## **Main Advantages:**

### **Intelligent Setting**

1. Intelligent setting: simple setting, completed within 5 minutes
2. Intelligent algorithm, with accurate and stable effect
3. DIY your own selection classification, done by one click
4. 180 rotating operation display, flexible operation in different positions

### **Software Advantage**

1. Intelligent monitoring of background data, remote setting & bug locking
2. Data visualization, storage integration, and one-click replacement of popular programs.
3. Big data, cloud storage, free download

## Hardware Advantage

1. High-definition 5400 pixel full-color sensor
2. High-brightness LED cold light source
3. High-frequency solenoid valve, intelligent algorithm tracking, precise rejection
4. Customized belt, stable conveying, no bullets, and anti-breaking

## Parameters

Technical Index List						
Channel Number	Total Power	Voltage	Air Pressure	Air Consumption	Dimension (L*D*H)(mm)	Weight
63	1.5 kW	180 ~ 240V 50Hz	0.6 ~ 0.8MPa	≤1.2 m <sup>3</sup> /min	3780x1270x2000	950 kg
126	2.0 kW			≤2.0 m <sup>3</sup> /min	3780x1580x2000	1100 kg
189	2.5 kW			≤2.5 m <sup>3</sup> /min	3780x1890x2000	1250 kg
252	3.0 kW			≤3.0 m <sup>3</sup> /min	3780x2200x2000	1400 kg
252	3.0 kW			≤3.0 m <sup>3</sup> /min	4950x1800x2400	2050 kg
504	4.0 kW			≤4.0 m <sup>3</sup> /min	4950x2420x2400	2650 kg

### Note:

- This parameter takes peanuts as an example (the impurity content is 2%), and the above parameter indicators may vary due to different materials and impurity content.
- If the product is updated without notice, the actual machine shall prevail.

# Color Sorter Platform



## Color Sorter Platform Features

### 1. Auto learning

Automatic modeling, matching the optimal classification method, simple operation, providing customers with the best and most economical sorting solution

### 2. Automatic correction

Through real-time dynamic image calibration, the stability and anti-interference performance of the machine can be greatly improved

### 3. Parameter setting

The color sorter can automatically calculate, intelligently identify and sort materials according to the sorting rule. Users can freely select and define the color, shape, size and defect area of materials, and automatically judge and accurately match the optimal sorting scheme through intelligent automatic control technology.

### 4. Intelligent Cloud Control

Users can remote control, operate and maintain, software upgrade, diagnose and solve the problems of light source and electrical and mechanical calibration, online detection of product operation, data collection, online guidance, etc. Thus, creating product application value for customers to the maximum extent.

### 5. Sorting of shape and size

Through multi-dimensional coordinate algorithm, the color sorter can intelligently identify the subtle shape differences of materials, so as to classify materials of different shape categories such as size, length, precision, square, single and double.

## **Main Advantages:**

### **Intelligent Setting**

1. Intelligent setting: simple setting, completed within 5 minutes
2. Intelligent algorithm, with accurate and stable effect
3. DIY your own selection classification, done by one click
4. 180 rotating operation display, flexible operation in different positions



## Software Advantage

1. Intelligent monitoring of background data, remote setting & bug locking
2. Data visualization, storage integration, and one-click replacement of popular programs
3. Big data, cloud storage, free download

## Hardware Advantage

1. High-definition 5400 pixel full-color sensor
2. High-brightness LED cold light source
3. High-frequency solenoid valve, intelligent algorithm tracking, precise rejection
4. Customized belt, stable conveying, no bullets, and anti-breaking

## Parameters

Technical Index List						
Channel Number	Total Power	Voltage	Air Pressure	Air Consumption	Dimension (L*D*H)(mm)	Weight
63	1.5 kW	180~240V 50Hz	0.6~0.8MPa	≤1.2 m <sup>3</sup> /min	3780x1270x2000	950 kg
126	2.0 kW			≤2.0 m <sup>3</sup> /min	3780x1580x2000	1100 kg
189	2.5 kW			≤2.5 m <sup>3</sup> /min	3780x1890x2000	1250 kg
252	3.0 kW			≤3.0 m <sup>3</sup> /min	3780x2200x2000	1400 kg
252	3.0 kW			≤3.0 m <sup>3</sup> /min	4950x1800x2400	2050 kg
504	4.0 kW			≤4.0 m <sup>3</sup> /min	4950x2420x2400	2650 kg

### Note:

- This parameter takes peanuts as an example (the impurity content is 2%), and the above parameter indicators may vary due to different materials and impurity content.
- If the product is updated without notice, the actual machine shall prevail.

Technical Index List						
Channel Number	Total Power	Voltage	Air Pressure	Air Consumption	Dimension (L*D*H)(mm)	Weight
3 × 63	2.0 kW	180~240V, 50HZ	0.6~0.8MPa	≤2.0 m <sup>3</sup> /min	1680x1600x2020	750 kg
4 × 63	2.5 kW			≤2.4 m <sup>3</sup> /min	1990x1600x2020	900 kg
5 × 63	3.0 kW			≤2.8 m <sup>3</sup> /min	2230x1600x2020	1200 kg
6 × 63	3.4 kW			≤3.2 m <sup>3</sup> /min	2610x1600x2020	1400 kg
7 × 63	3.8 kW			≤3.5 m <sup>3</sup> /min	2970x1600x2040	1600 kg
8 × 63	4.2 kW			≤4.0 m <sup>3</sup> /min	3280x1600x2040	1800 kg
10 × 63	4.8 kW			≤4.8 m <sup>3</sup> /min	3590x1600x2040	2200 kg
12 × 63	5.3 kW			≤5.4 m <sup>3</sup> /min	4290x1600x2040	2600 kg

### Note:

- This parameter takes peanuts as an example (the impurity content is 2%), and the above parameter indicators may vary due to different materials and impurity content.
- if the product is updated without notice, the actual machine shall prevail.

# Combo Metal Detector and Checkweigher



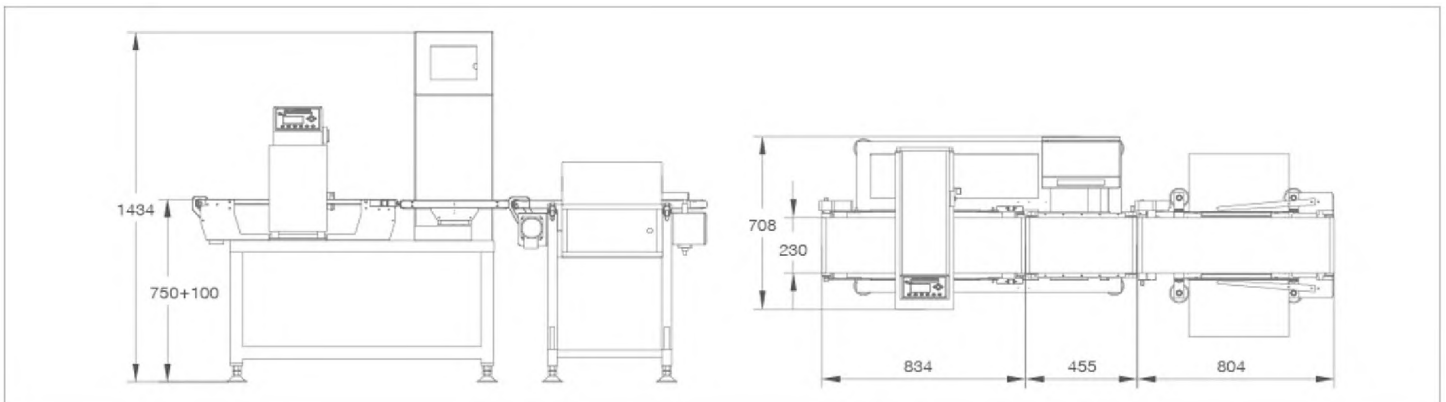
Metal detector and check weigher combo machine, metal detection, and weight check can be achieved in one machine at the same time. Widely used for food, agricultural products, medicine, consumables and other industries.

## **Main Advantages:**

Compact design, saving space and installation cost

Metal detector and checkweigher is perfectly connected in one frame, to install the machine in workshop conveniently and effectively

## **External dimensions**





## Parameters

Model		IMC-230L	IMC-300
Detecting Range		20~2000g	20~5000g
Scale Interval		0.1g	0.2g
Accuracy (3 $\sigma$ )		$\pm 0.2g$	$\pm 0.5g$
Detecting Speed (Max Speed)		155pcs/min	140pcs/min
Maximum Belt Speed		70m/min	70m/min
Weighed Product Size	Width	220mm	290mm
	Length	350mm	400mm
	Height	70mm, 110mm, 140mm, 170mm	
Weigher Platform Size	Width	230mm	300mm
	Length	450mm	500mm
	Height	80mm, 120mm, 150mm, 180mm	
Sensitivity	Fe	$\Phi 0.5mm, \Phi 0.7mm, \Phi 0.7mm, \Phi 0.7mm,$	
	SUS	$\Phi 1.2mm, \Phi 1.5mm, \Phi 1.5mm, \Phi 2.0mm$	
Product Storage Quantity		100 kinds	
Segments Number		3	
Rejecter		Rejecter optional	
Power Supply		AC220V (Optional)	
IP Rate		IP54/IP66	
Main Material		Mirror polished/Sand blasted	

# Metal Detector for Biscuits



Metal detector is applicable to the online detection of products in packed and nonpacked, and it detects ferrous metal impurities (Fe), nonferrous metal impurities (Copper, Aluminum) and stainless steel to prevent them from entering the product.

Recommended use of Metal Detector for Biscuit

With unique design of pneumatic retracting band type rejecter to prevent the product from being disordered, this type of metal detector is widely used for different biscuits and sweets production line.

## **Main Advantages:**

### **Stable and High Sensitivity**

Special phase adjusting technology  
High sensitivity with stable performance  
Auto balance function

### **High Configuration**

Touch screen  
USB port  
Dual-frequency  
Customized rejecter system  
Different surface treatment

### **User-friendly Function**

Multi languages  
Customization  
Large memory capacity

### **Auto-learning Function**

Auto-learning product character  
Finish auto-learning process very soon

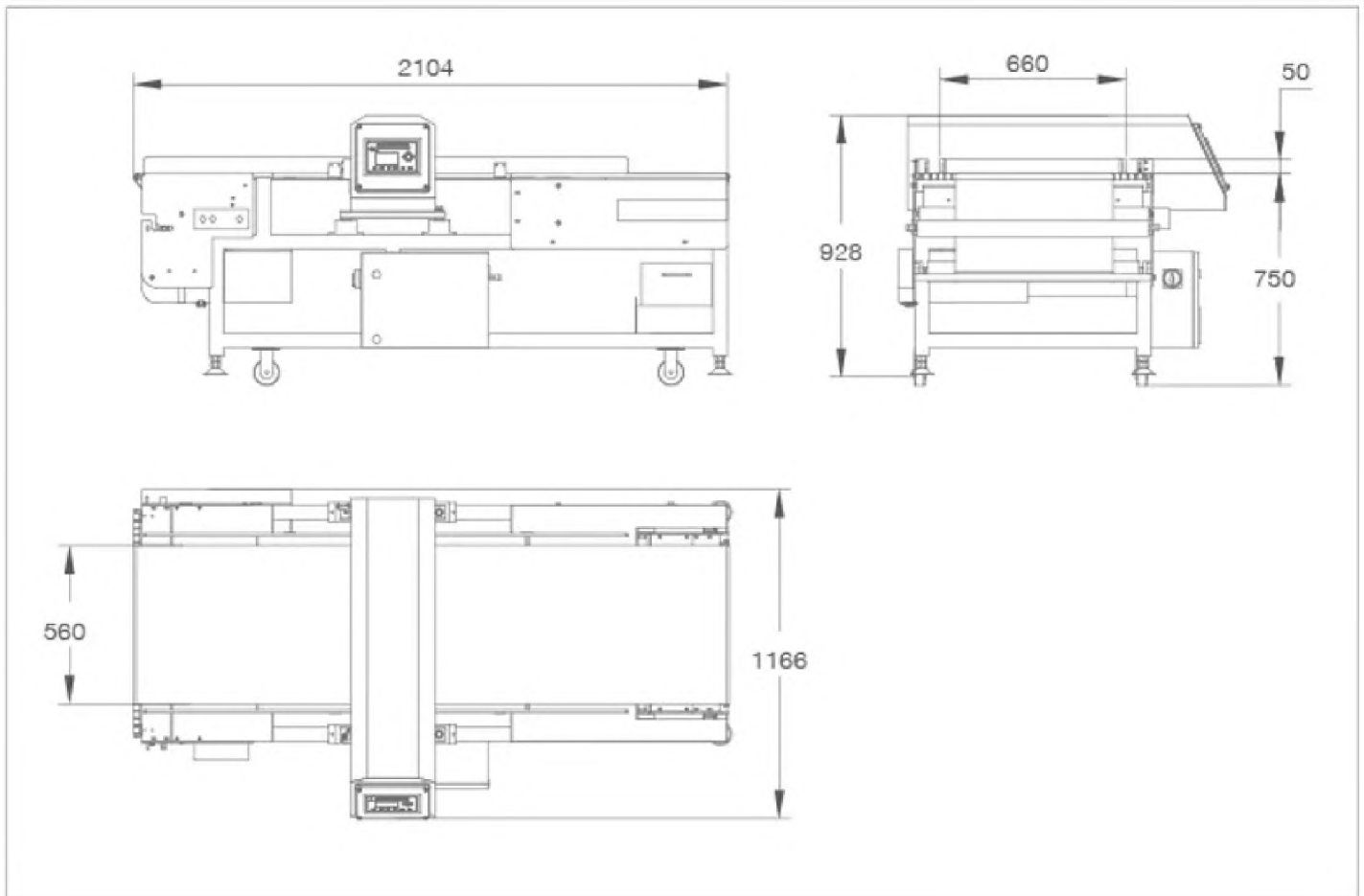
## Parameters

Model		IMD-B			
Specifications		60	80	100	120
Detection Width		600mm	800mm	1000mm	1200mm
Detection Height		50~80mm			
Sensitivity	Fe	Φ0.7mm	Φ0.8mm	Φ1.0mm	Φ1.2mm
	SUS304	Φ1.5mm	Φ1.5mm	Φ2.0mm	Φ2.5mm
Belt Width		560mm	760mm	960mm	1160mm
Conveyor Belt		Food grade PU			
Belt Speed		15m/min (Variable speed optional)			
Rejecter Mode		Pneumatic retracting band type			
Power Supply		AC220V (Optional)			
Main Material		SUS304			

### Note:

1. The technical parameter above namely is the result of sensitivity by detecting only the test sample on the belt. The sensitivity would be affected according to the products being detected, working condition and speed.
2. Requirements for different sizes by customers can be fulfilled.

## External Dimensions



# Conveyor Belt Metal Detector



Metal detector is applicable to the online detection of products in packed and nonpacked, and it detects ferrous metal impurities (Fe), nonferrous metal impurities (Copper, Aluminum) and stainless steel to prevent them from entering the product.

Recommended use of Conveyor Belt Metal Detector

1. Frequency-selecting function, two frequencies can be chosen to match different products
2. Dual-detection system ensures Fe and Sus achieve its best sensitivity
3. Auto-balance function ensures stable detection

## **Main Advantages:**

### **Stable and High Sensitivity**

Special phase adjusting technology  
High sensitivity with stable performance  
Auto balance function

### **High Configuration**

Touch screen  
USB port  
Dual-frequency  
Customized rejecter system  
Different surface treatment

### **User-friendly Function**

Multi languages  
Customization  
Large memory capacity

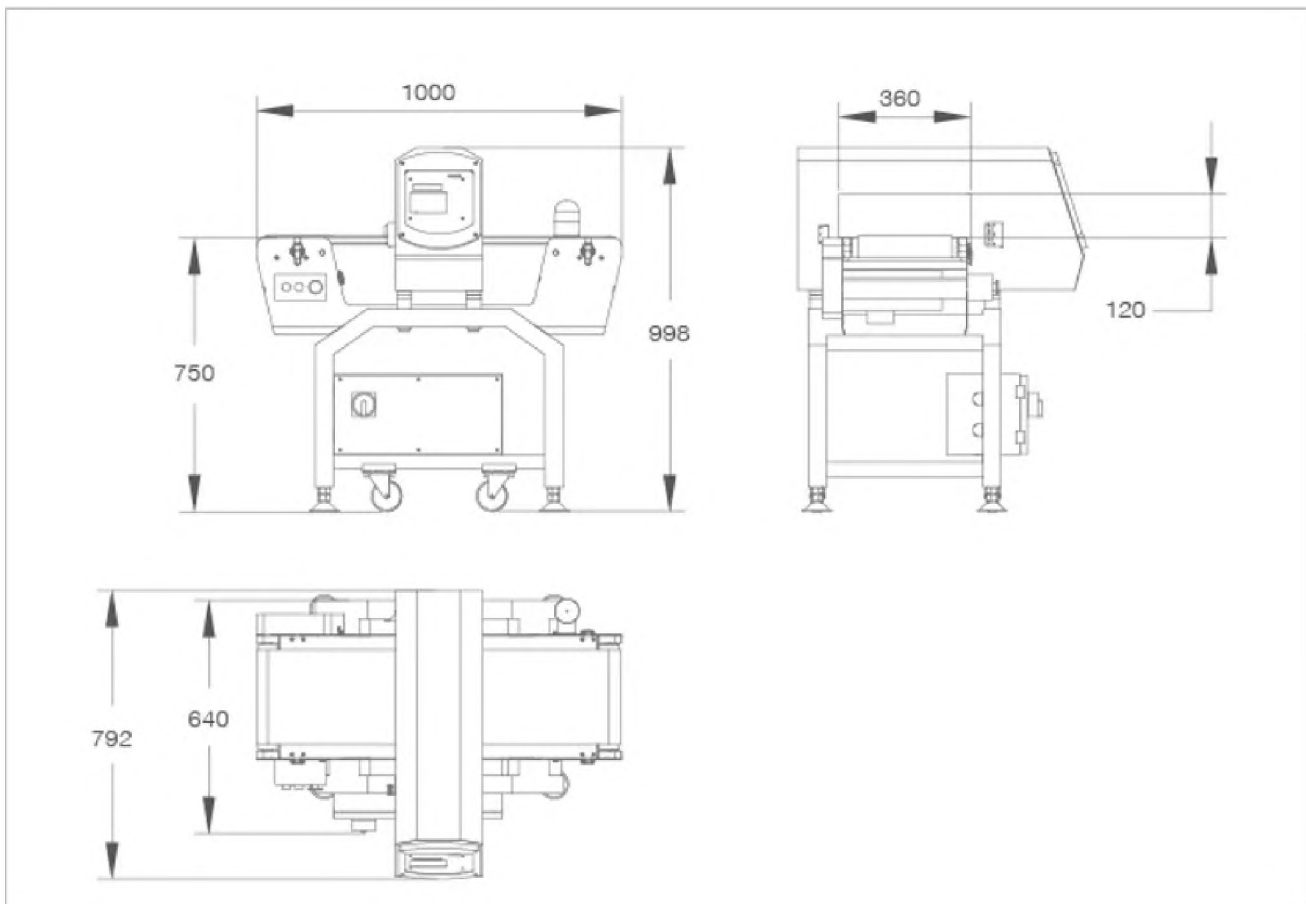
### **Auto-learning Function**

Auto-learning product character  
Finish auto-learning process very soon

## Parameters

Model		IMD		
Specifications		4008, 4012 4015, 4018	5020, 5025 5030, 5035	6025, 6030
Detection Width		400mm	500mm	600mm
Detection Height		80mm, 120mm 150mm, 180mm	200mm, 250mm 300mm, 350mm	250mm 300mm
Sensitivity	Fe	Φ0.5mm, Φ0.6mm Φ0.7mm, Φ0.8mm	Φ0.8mm, Φ1.0mm Φ1.2mm, Φ1.5mm	Φ1.2mm Φ1.5mm
	SUS304	Φ1.0mm, Φ1.2mm Φ1.5mm, Φ2.0mm	Φ2.0mm, Φ2.5mm Φ2.5mm, Φ3.0mm	Φ2.5mm Φ3.0mm
Belt Width		360mm	460mm	560mm
Loading Capacity		5kg~10kg	20kg~50kg	25kg~100kg
Display Mode		LCD display panel (FDM touch screen optional)		
Operation Mode		Button input (Touch input optional)		
Product Storage Quantity		52kinds (100 kinds with touch screen)		
Conveyor Belt		Food Grade PVC (PU and chain conveyor optional)		
Belt Speed		Fixed 25m/min (Variable speed optional)		
Rejecter Mode		Alarm and belt stops (Rejecter optional)		
Power Supply		AC220V (Optional)		
Main Material		SUS304		
Surface Treatment		Brushed SUS, Mirror polished, Sand blasted		

## External Dimensions



# Gravity Fall Metal Detector



Metal detector is applicable to the online detection of products in packed and nonpacked, and it detects ferrous metal impurities(Fe), nonferrous metal impurities (Copper, Aluminum) and stainless steel to prevent them from entering the product.

Recommended use of Gravity Fall Metal Detector

With compact design and small occupied space, this type of metal detector is suitable for the detection of powder, granule or other forms of bulk products.

## **Main Advantages:**

### **Stable and High Sensitivity**

Special phase adjusting technology  
High sensitivity with stable performance  
Auto balance function

### **High Configuration**

Touch screen  
USB port  
Dual-frequency  
Customized rejecter system  
Different surface treatment

### **User-friendly Function**

Multi languages  
Customization  
Large memory capacity

### **Auto-learning Function**

Auto-learning product character  
Finish auto-learning process very soon



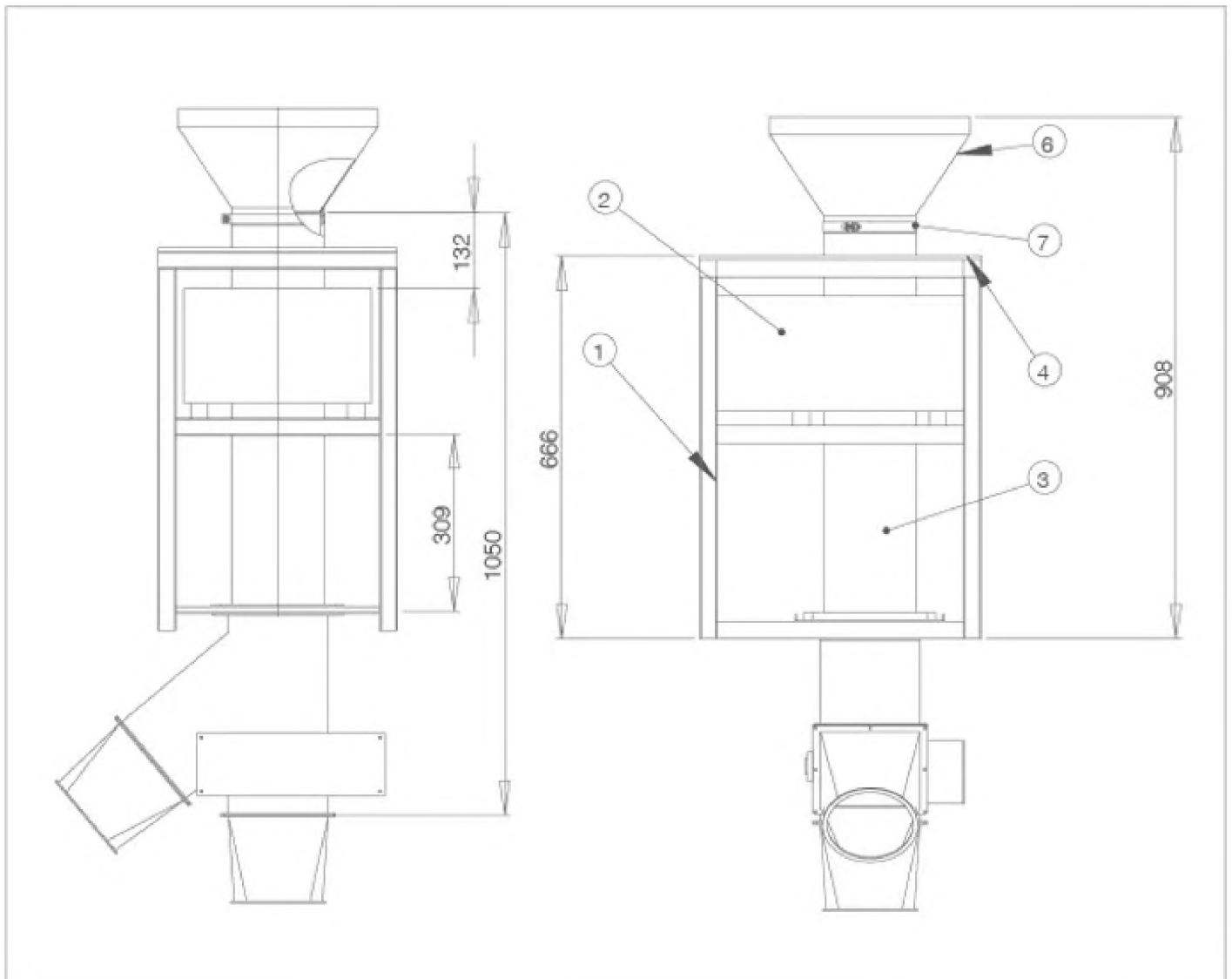
## Parameters

Model	IMD-P						
Detection Diameter(mm)	Detection Capacity t/h <sup>2</sup>	Rejecter Mode	Pressure Requirement	Power Supply	Main Material	Sensitivity'Φd (mm)	
						Fe	SUS
50	1	Automatic flap rejecter	0.5Mpa≥	AC220V (Optional)	Stainless steel (SUS304)	0.5	1.2
75	3					0.5	1.2
100	5					0.7	1.5
150	10					0.7	1.5

**Note:**

1. The technical parameter above namely is the result of sensitivity by detecting only the test sample inside the pipe. The sensitivity would be affected according to the products being detected and working condition.
2. Detecting capacity per hour is related with product weight. the value of the table is according to the density of water (1000kg/m<sup>3</sup>).
3. Requirements for different sizes by customers can be fulfilled.

## External Dimensions



# Pharmaceutical Metal Detector



Metal detector is applicable to the online detection of products in packed and nonpacked, and it detects and rejects any kind of metal (whether ferrous, non-ferrous, or stainless steel) to prevent them from entering the product.

Recommended use of Pharmaceutical Metal Detector

High sensitivity and stability detection of ferrous metal (Fe), non-ferrous metals (Copper, Aluminum) and stainless steel, this type of machine is suitable to be installed after some pharmaceutical equipment like the tablet press machine, the capsule filling machine and the sieve machine.

## **Main Advantages:**

### **High Sensitivity and stability**

Technology that can support special phase adjusting  
High sensitivity and stability  
Auto balance function

### **High Configuration**

Touch screen  
USB port  
Dual-frequency  
Customized rejecter system  
Different surface treatment

### **User-friendly Function**

Multi languages  
Can be customized according to clients' requirements  
Large memory capacity

### **Auto-learning Function**

Auto-learning product character  
Finish auto-learning process very soon

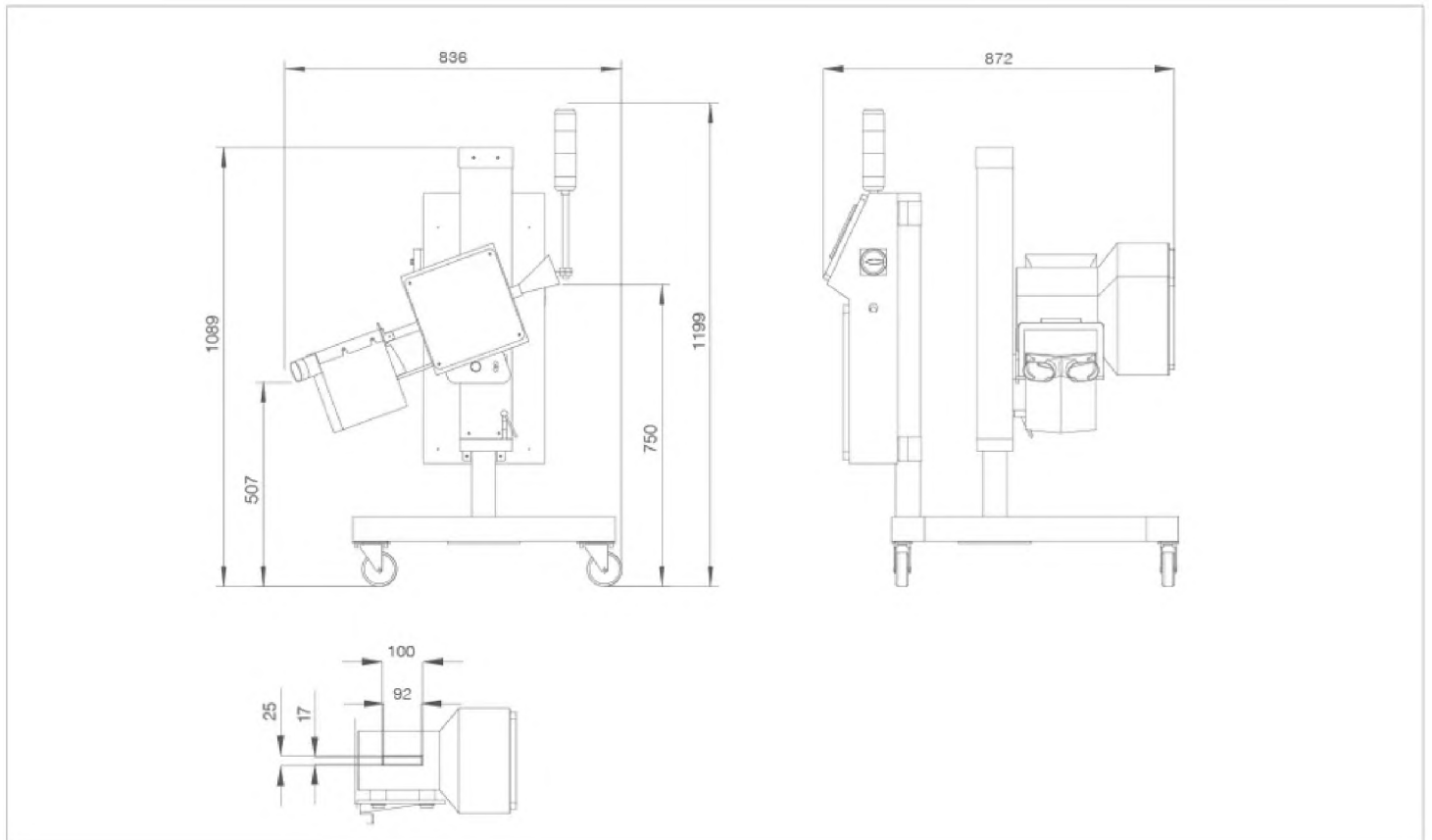
## Parameters

Model	IMD-M80	IMD-M100	IMD-M150
Detection Width	72mm	87mm	137mm
Detection Height	17mm	15mm	25mm
Sensitivity	Fe	Φ0.3-0.5mm	
	SUS304	Φ0.6-0.8mm	
Display Mode	TFT touch screen		
Operation Mode	Touch input		
Product Storage Quantity	100kinds		
Channel Material	Food grade plexiglass		
Rejecter Mode	Automatic rejection		
Power Supply	AC220V (Optional)		
Pressure Requirement	≥0.5Mpa		
Main Material	SUS304(Product contact parts: SUS316)		

### *Note:*

1. The technical parameter above namely is the result of sensitivity by detecting only the test sample inside the channel. The sensitivity would be affected according to the products being detected and working condition.
2. Requirements for different sizes by customers can be fulfilled.

## External Dimensions



# Pharmacy/Tablets Metal Detector



Metal detector is applicable to the online detection of products in packed and nonpacked, and it detects ferrous metal impurities (Fe), nonferrous metal impurities (Copper, Aluminum) and stainless steel to prevent them from entering the product.

Recommended use of Metal Detector for Pharmacy/Tablets

High sensitivity and stability detection of ferrous metal (Fe), non-ferrous metals (Copper, Aluminum) and stainless steel, this type of machine is suitable to be installed after some pharmaceutical equipment like the tablet press machine, the capsule filling machine and the sieve machine.

## **Main Advantages:**

### **Stable and High Sensitivity**

Special phase adjusting technology  
High sensitivity with stable performance  
Auto balance function

### **High Configuration**

Touch screen  
USB port  
Dual-frequency  
Customized rejecter system  
Different surface treatment

### **User-friendly Function**

Multi languages  
Can be customized according to clients' requirements  
Large memory capacity

### **Auto-learning Function**

Auto-learning product character  
Finish auto-learning process very soon

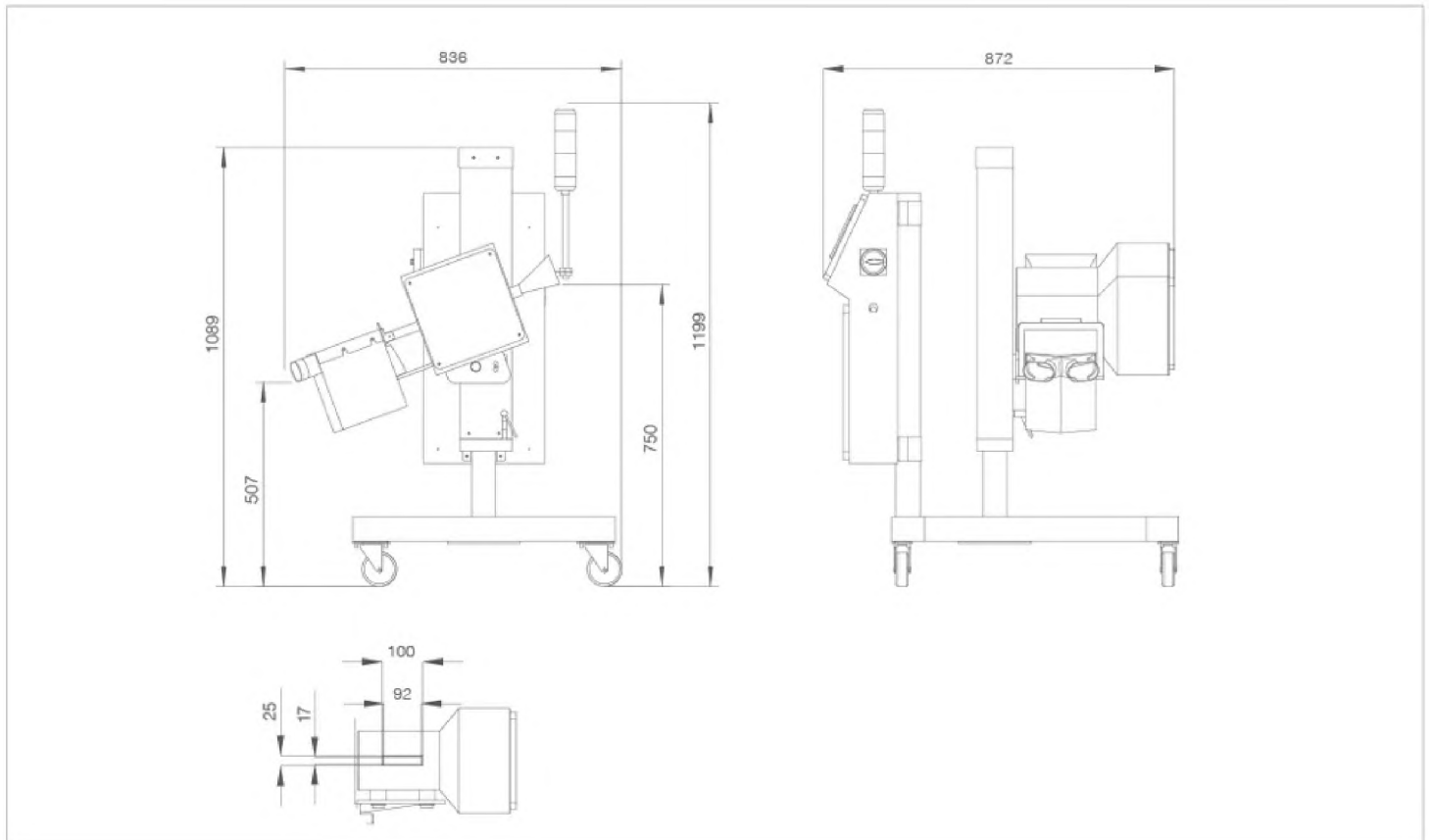
## Parameters

Model	IMD-M80	IMD-M100	IMD-M150
Detection Width	72mm	87mm	137mm
Detection Height	17mm	15mm	25mm
Sensitivity	Fe	Φ0.3-0.5mm	
	SUS304	Φ0.6-0.8mm	
Display Mode	TFT touch screen		
Operation Mode	Touch input		
Product Storage Quantity	100kinds		
Channel Material	Food grade plexiglass		
Rejecter Mode	Automatic rejection		
Power Supply	AC220V (Optional)		
Pressure Requirement	≥0.5Mpa		
Main Material	SUS304(Product contact parts: SUS316)		

### *Note:*

1. The technical parameter above namely is the result of sensitivity by detecting only the test sample inside the channel. The sensitivity would be affected according to the products being detected and working condition.
2. Requirements for different sizes by customers can be fulfilled.

## External Dimensions



# High-speed Checkweigher



Dynamic checkweigher is an automatic machine for checking the weight of packaged commodities via the sensor and digital signal processing technology. A high speed checkweigher system will check weights of products whilst in high speed motion, rejecting any products that are over or under the set weight. It is widely used in pharmaceutical, foodstuffs, personal care products and light industries for in-line weight check to ensure the product quality.

Recommended use of checkweigher systems

1. Checking for under/over weight packages, compliance with the pre-packaging regulation
2. Checking for missing components to ensure the product completeness
3. Quality control, weight data of each products is recorded
4. Classification products by weight
5. Realizing a weight information feedback loop, optimization of the filling and dosing processes

## **Main Advantages:**

### **Good weighing performance**

High speed, maximum belt speed can reach 110m/min  
High sensitivity,  $\pm 0.1g$  best accuracy  
High stability

### **Professional and hygienic design**

Buckle design  
Brush-less motor and imported load-cell  
Easy to clean, simple to disassemble  
Stainless steel and aluminum frame  
Food grade PU belt

### **7-inch touch screen, user-friendly function**

Multi language  
Data storage  
Large memory capacity  
Brief user parameter setting



## Accurate and efficient rejecter system

Air jet rejecter  
Pusher rejecter  
Flipper bar rejecter  
Customized rejecter systems

## Complete technical function

Process control function  
Data communication function (USB, Modbus RTU, TCP)  
Static Weighing Function  
TNE Function

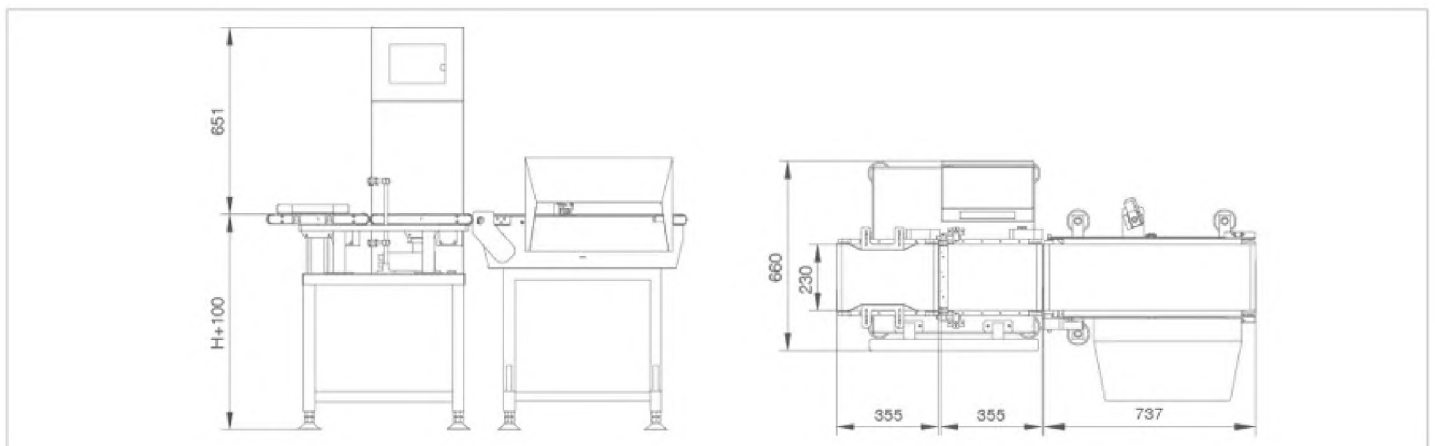
## Parameters

Model		IXL-H-160	IXL-H-230S	IXL-H-230L	IXL-H-300
Detecting Range		10~600g	20~2000g	20~2000g	20~5000g
Accuracy (3 $\sigma$ )		$\pm 0.1g$	$\pm 0.2g$	$\pm 0.2g$	$\pm 0.5g$
Max Speed		250pcs/min	200pcs/min	155pcs/min	140pcs/min
Belt Speed		70m/min			
Weighed Product Size	Width	150mm	220mm	220mm	290mm
	Length	200mm	250mm	350mm	400mm
Weigher Platform Size	Width	160mm	230mm	230mm	300mm
	Length	280mm	350mm	450mm	500mm
Operation Screen		10" touch screen			
Product Storage Quantity		100 kinds			
Segments Number		3			
Rejecter Mode		Rejecter optional			
Power Supply		220V (Optional)			
IP Rate		IP30/IP54/IP66			
Body Material		Stainless steel (SUS304)			

### Note:

1. The technical parameter above namely is the result of accuracy by checking only the test sample on the belt. The accuracy would be affected according to the detecting speed and product weight.
2. The detecting speed above will be affected according to the product size to be checked.
3. Requirements for different sizes by customers can be fulfilled.

## External Dimensions



# Checkweigher for Small Package



Dynamic checkweigher is an automatic machine for checking the weight of packaged commodities via the sensor and digital signal processing technology. A checkweigher system will check weights of products whilst in motion, rejecting any products that are over or under the set weight. It is widely used in pharmaceutical, foodstuffs, personal care products and light industries for in-line weight check to ensure the product quality.

Recommended use of checkweigher systems

1. Checking for under/over weight packages, compliance with the pre-packaging regulation
2. Checking for missing components to ensure the product completeness
3. Quality control, weight data of each products is recorded
4. Classification products by weight
5. Realizing a weight information feedback loop, optimization of the filling and dosing processes

## **Main Advantages:**

### **Good weighing performance**

High speed  
High sensitivity  
High stability

### **Professional and hygienic design**

Buckle design  
Easy to clean, simple to disassemble  
Stainless steel and aluminum frame  
Food grade PU belt

### **7-inch touch screen, user-friendly function**

Multi language  
Data storage  
Large memory capacity  
Brief user parameter setting

## Complete technical function

Process control function

Data communication function (USB, Modbus RTU, TCP)

Static Weighing Function

TNE Function

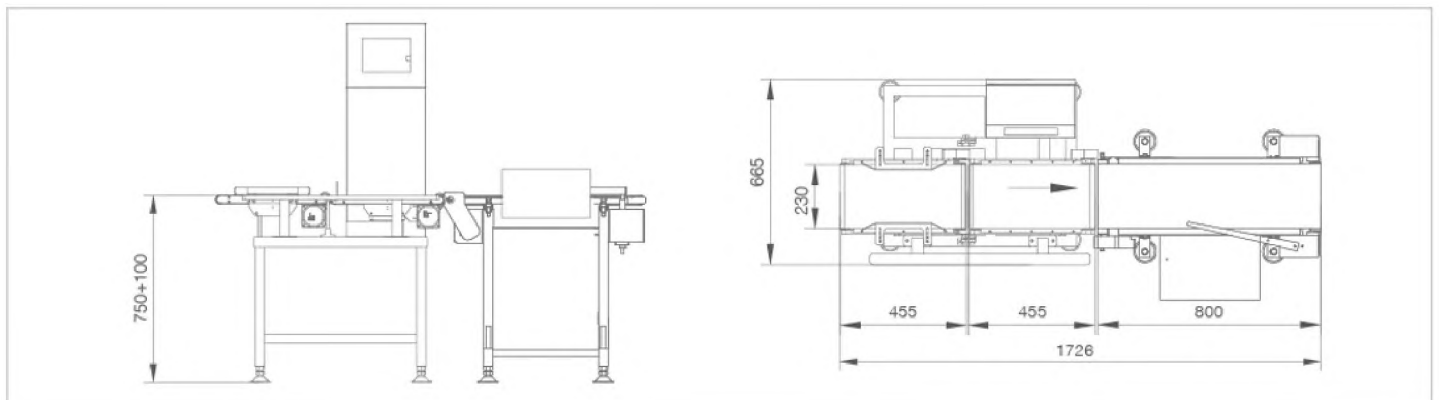
## Parameters

Model	IXL-160	IXL-230S	IXL-230L	IXL-300	IXL-400	
Detecting Range	10~600g	20~2000g	20~2000g	20~5000g	0.2~10kg	
Scale Interval	0.05g	0.1g	0.1g	0.2g	1g	
Accuracy (3 $\sigma$ )	$\pm 0.1g$	$\pm 0.2g$	$\pm 0.2g$	$\pm 0.5g$	$\pm 1g$	
Max Speed	250pcs/min	200pcs/min	155pcs/min	140pcs/min	105pcs/min	
Belt Speed	70m/min	70m/min	70m/min	70m/min	70m/min	
Weighed Product Size	Width	150mm	220mm	220mm	290mm	390mm
	Length	200mm	250mm	350mm	400mm	500mm
Weigher Platform Size	Width	160mm	230mm	230mm	300mm	400mm
	Length	280mm	350mm	450mm	500mm	650mm
Operation Screen	7" touch screen					
Product Storage Quantity	100 kinds					
Segments Number	3					
Rejecter Mode	Rejecter optional					
Power Supply	220V (Optional)					
IP Rate	IP30/IP54/IP66					
Main Material	Stainless steel (SUS304)					

### Note:

1. The technical parameter above namely is the result of accuracy by checking only the test sample on the belt. The accuracy would be affected according to the detecting speed and product weight.
2. The detecting speed above will be affected according to the product size to be checked.
3. Requirements for different sizes by customers can be fulfilled.

## External Dimensions



# Industrial Scale for Large Package



Industrial Scale for Large Packages is suitable for weight checking for packaged products, to ensure quality standards. Industrial Scale for Large Packages can weigh products as heavy as 50 kilograms.

## Features of Industrial Scale for Large Packages

1. High speed, high sensitivity, high stability dynamic weight checking
2. Easy to clean, simple to disassemble
3. Multi language
4. Data storage
5. Large memory capacity
6. Touch screen
7. USB port, Ethernet function
8. Real time monitoring on PC

## **Main Advantages:**

### **Professional and hygienic design**

Buckle design  
Easy to clean, simple to disassemble  
Stainless steel and aluminum frame  
Food grade PU belt

### **7-inch touch screen, user-friendly function**

Multi language  
Data storage  
Large memory capacity  
Brief user parameter setting

### **Good weighing performance**

High speed  
High sensitivity  
High stability

## Complete technical function

Process control function

Data communication function (USB, Modbus RTU, TCP)

Static Weighing Function

TNE Function

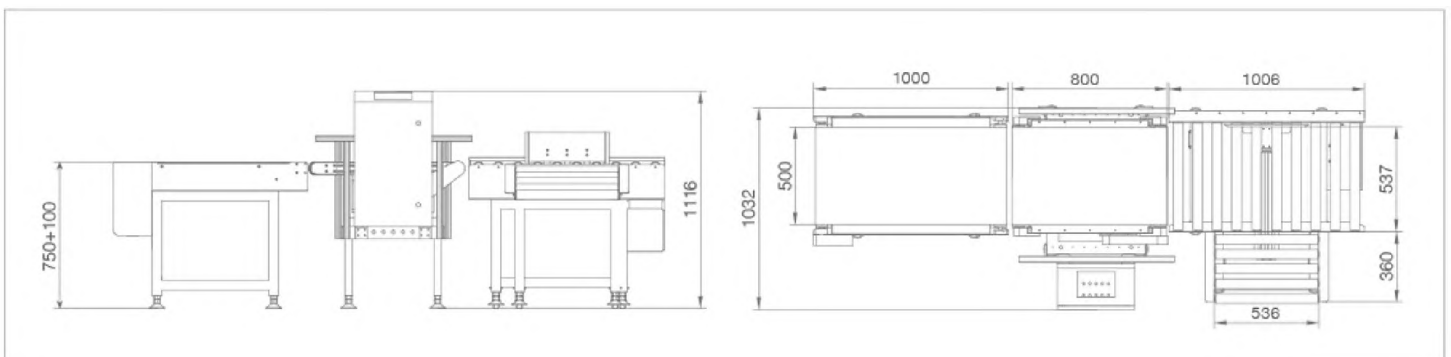
## Parameters

Model		IXL-500	IXL-600
Detecting Range		0.5-25kg	1~50kg
Scale Interval		1g	5g
Accuracy (3 $\sigma$ )		$\pm 2g$	$\pm 5g$
Max Speed		75pcs/min	50pcs/min
Belt Speed		60m/min	60m/min
Weighed Product Size	Width	490mm	590mm
	Length	700mm	1000mm
Weigher Platform Size	Width	500mm	600mm
	Length	800mm	1200mm
Operation Screen		7" touch screen	
Product Storage Quantity		100 kinds	
Segments Number		1	
Rejecter Mode		Rejecter optional	
Power Supply		220V (Optional)	
IP Rate		IP30/IP54	
Main Material		Carbon Steel, SUS 304, Aluminum Alloy (Full SUS 304 Optionl)	

### Note:

1. The technical parameter above namely is the result of accuracy by checking only the test sample on the belt. The accuracy would be affected according to the detecting speed and product weight.
2. The detecting speed above will be affected according to the product size to be checked.
3. Requirements for different sizes by customers can be fulfilled.

## External Dimensions



# Industrial Scale for Small Packages



Dynamic checkweigher is an automatic machine for checking the weight of packaged commodities via the sensor and digital signal processing technology. A checkweigher system will check weights of products whilst in motion, rejecting any products that are over or under the set weight. It is widely used in pharmaceutical, foodstuffs, personal care products and light industries for in-line weight check to ensure the product quality.

Recommended use of checkweigher systems

1. Checking for under/over weight packages, compliance with the pre-packaging regulation
2. Checking for missing components to ensure the product completeness
3. Quality control, weight data of each products is recorded
4. Classification products by weight
5. Realizing a weight information feedback loop, optimization of the filling and dosing processes

## **Main Advantages:**

### **Good weighing performance**

High speed  
High sensitivity  
High stability

### **Professional and hygienic design**

Buckle design  
Easy to clean, simple to disassemble  
Stainless steel and aluminum frame  
Food grade PU belt

### **7-inch touch screen, user-friendly function**

Multi language  
Data storage  
Large memory capacity  
Brief user parameter setting



## Complete technical function

Process control function

Data communication function (USB, Modbus RTU, TCP)

Static Weighing Function

TNE Function

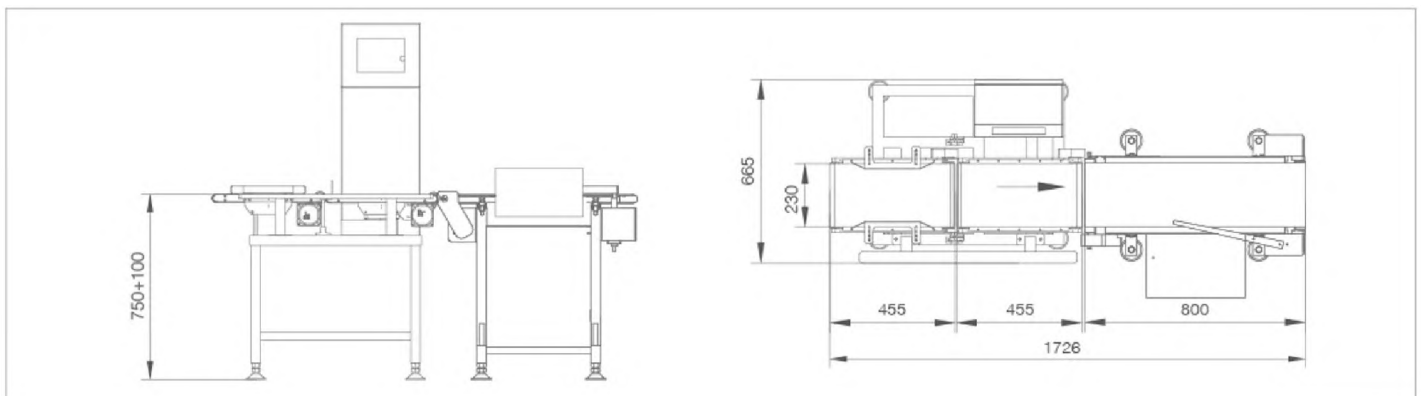
## Parameters

Model	IXL-160	IXL-230S	IXL-230L	IXL-300	IXL-400	
Detecting Range	5~600g	20~2000g	20~2000g	20~5000g	0.2~10kg	
Scale Interval	0.05g	0.1g	0.1g	0.2g	1g	
Accuracy (3 $\sigma$ )	$\pm 0.1g$	$\pm 0.2g$	$\pm 0.2g$	$\pm 0.5g$	$\pm 1g$	
Max Speed	250pcs/min	200pcs/min	155pcs/min	140pcs/min	105pcs/min	
Belt Speed	70m/min	70m/min	70m/min	70m/min	70m/min	
Weighed Product Size	Width	150mm	220mm	220mm	290mm	390mm
	Length	200mm	250mm	350mm	400mm	500mm
Weigher Platform Size	Width	160mm	230mm	230mm	300mm	400mm
	Length	280mm	350mm	450mm	500mm	650mm
Operation Screen	7" touch screen					
Product Storage Quantity	100 kinds					
Segments Number	3					
Rejecter Mode	Rejecter optional					
Power Supply	220V (Optional)					
IP Rate	IP54/IP66					
Main Material	Mirror polished/Sand blasted					

### Note:

1. The technical parameter above namely is the result of accuracy by checking only the test sample on the belt. The accuracy would be affected according to the detecting speed and product weight.
2. The detecting speed above will be affected according to the product size to be checked.
3. Requirements for different sizes by customers can be fulfilled.

## External Dimensions



# Multi-tray Weight Sorting Machine



The multi-tray weight sorting machine uses precise dynamic weighing technology to weigh and sort the products with different weights into different preset grades continuously and automatically. It is widely used in seafood, poultry, aquatic products, fruit and vegetable, etc.

Recommended use of multi-tray weight sorting machine

1. Save labor. One weight sorting machine can replace about 6-10 people.
2. Reduce human exposure to product and meet the requirements of food HACCP safety.
3. Enhance production efficiency and corporate reputation.
4. Realize a weight information feedback loop via the data log.

## **Main Advantages:**

### **Good weighing performance**

High speed, maximum speed can meet 280 ppm

High sensitivity,  $\pm 0.5g$

High stability

### **Professional and hygienic design**

Easy to clean, IP66 rating

Stainless steel frame

Food grade resin tray

Accurate and efficient electronic rejecter system

### **7-inch touch screen, user-friendly function**

Multi language

Data storage

Large memory capacity

Brief user parameter setting

## Complete technical function

Auto Calibration

Zero point automatic tracking

Three level user password

Sorting zone free setting

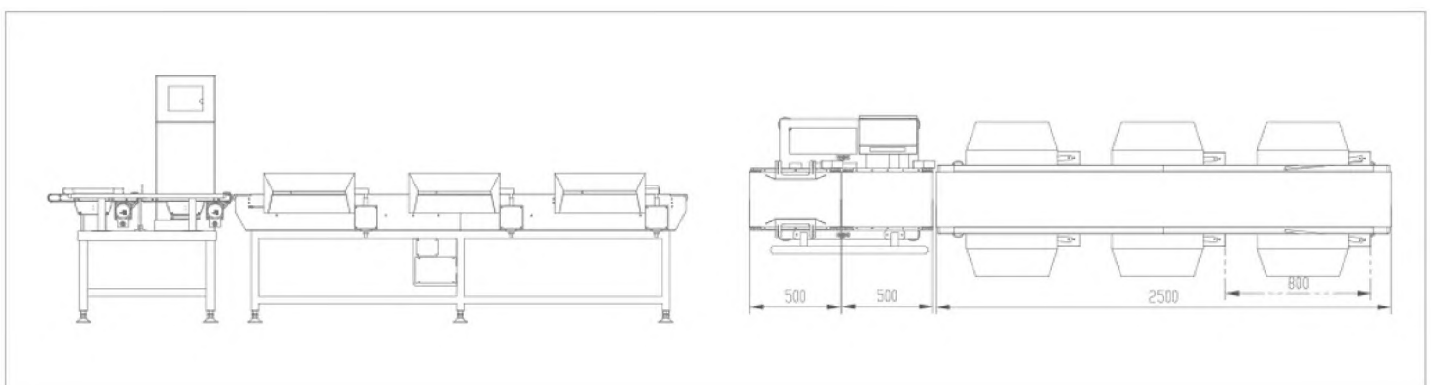
## Parameters

Specification	IXL-GWS-S-8R	IXL-GWS-S-16R	IXL-GWM-S-8R	IXL-GWM-S-16R	IXL-GWL-S-8R	IXL-GWL-S-16R
Range	Up to 8	Up to 16	Up to 8	Up to 16	Up to 8	Up to 16
Accuracy	±1%				±2%	
Maximum Speed	300 pcs per minute		280 pcs per minute		200 pcs per minute	
Detecting Range	2g~500g		4g~500g		5g~1,000g	
Power Consumption	400W				450W	
Machine Size	Length	4,200mm		5,000mm		5,200mm
	Width	700mm		500mm		500mm
	Height	1,500mm		1,500mm		1,500mm
Operation Height	800mm~950mm					
Machine weight	350kg		400kg		450kg	
IP Rate	IP66					
Suitable Products	Wing, thigh, sea cucumber, abalone, shrimp, fish, etc.		Thigh, breast, fruit, melon, etc.		Large chunk of meat, fish, etc.	
Scale Quantity	1 scale platform					
Tray sizes	170mm, 190mm, 220mm		195mm		300mm	
Main Material	Stainless steel (SUS304) & food grade resin					

### Note:

The weighing accuracies are variables which are depended on the product characters, shapes, masses, sizes and the detecting speeds.

## External Dimensions



Архангельск (8182)63-90-72  
Астана (7172)727-132  
Астрахань (8512)99-46-04  
Барнаул (3852)73-04-60  
Белгород (4722)40-23-64  
Брянск (4832)59-03-52  
Владивосток (423)249-28-31  
Волгоград (844)278-03-48  
Вологда (8172)26-41-59  
Воронеж (473)204-51-73  
Екатеринбург (343)384-55-89  
Иваново (4932)77-34-06

Ижевск (3412)26-03-58  
Иркутск (395)279-98-46  
Казань (843)206-01-48  
Калининград (4012)72-03-81  
Калуга (4842)92-23-67  
Кемерово (3842)65-04-62  
Киров (8332)68-02-04  
Краснодар (861)203-40-90  
Красноярск (391)204-63-61  
Курск (4712)77-13-04  
Липецк (4742)52-20-81  
Киргизия (996)312-96-26-47

Магнитогорск (3519)55-03-13  
Москва (495)268-04-70  
Мурманск (8152)59-64-93  
Набережные Челны (8552)20-53-41  
Нижний Новгород (831)429-08-12  
Новокузнецк (3843)20-46-81  
Новосибирск (383)227-86-73  
Омск (3812)21-46-40  
Орел (4862)44-53-42  
Оренбург (3532)37-68-04  
Пенза (8412)22-31-16  
Россия (495)268-04-70

Пермь (342)205-81-47  
Ростов-на-Дону (863)308-18-15  
Рязань (4912)46-61-64  
Самара (846)206-03-16  
Санкт-Петербург (812)309-46-40  
Саратов (845)249-38-78  
Севастополь (8692)22-31-93  
Симферополь (3652)67-13-56  
Смоленск (4812)29-41-54  
Сочи (862)225-72-31  
Ставрополь (8652)20-65-13  
Казахстан (772)734-952-31

Сургут (3462)77-98-35  
Тверь (4822)63-31-35  
Томск (3822)98-41-53  
Тула (4872)74-02-29  
Тюмень (3452)66-21-18  
Ульяновск (8422)24-23-59  
Уфа (347)229-48-12  
Хабаровск (4212)92-98-04  
Челябинск (351)202-03-61  
Череповец (8202)49-02-64  
Ярославль (4852)69-52-93